



COASTAL CURRENTS
ARTS FESTIVAL
HASTINGS & ST LEONARDS

2017

02 SEPT - 01 OCT
COASTALCURRENTS.ORG.UK
@COASTALCURRENTS #CCFEST2017



**THE WHITE
ROCK HOTEL**

**The White Rock Hotel,
with stunning sea
views, fabulous cafe
bar, lovely rooms and
perfect location, why stay
anywhere else?**

Situated in a prime position on Hastings seafront, the White Rock Hotel is the perfect place to stay for your visit to Hastings, whether for business or pleasure.

Our hotel offers modern comfortable rooms and professional but friendly service. We offer the security and convenience of a 24 hour reception, food and drink available all day in our stylish cafe-bar and room service at no extra charge. We also have our own car park, free WiFi and a choice of meeting rooms.

The Terrace cafe-bar's famed sea front terraces are the ideal place to breakfast al fresco, meet friends for lunch or sip cocktails in the moonlight. Perhaps unusually for such a modern bar, we are also noted for our excellent local beers and our 'dogs welcome' policy.

To book, please call us
on **01424 422240**

www.thewhiterockhotel.com
info@thewhiterockhotel.com



A word from the Director Tina Morris

Welcome to Coastal Currents Arts Festival 2017

This year, we've grown up a little. Not in the conventional sense perhaps, but we know what we do best; accessible art which makes you look at your environment a little differently, in an area of immense talent with a supportive and wholly unique creative community on which we depend.

We've got a bit bigger; with a little extra hard work we've raised a little more money and given you a little bit more in the way of a curated programme, keeping as much of it FREE in order to make this festival as accessible as possible.

We've become independent although we couldn't do without the funding support of Hastings Borough Council, East Sussex Arts Partnership and of course Arts Council England.

We can now start to plan ahead for 2018 and 2019 and work with an ever increasing number of partners and artists, allowing for bigger, better and more permanent legacies.

With over 80 artists in the Open Studios and over 36 submitted events this year, there is something for everyone in this celebration of the arts and culture of 1066 country.

We are very grateful for all artists, organisers and advertisers who have contributed to Coastal Currents 2017.

Design by Luke Herriott at Studioink.co.uk

With special thanks to Home Live Art, Lorna Crabbe, Creative Coast, Greig Burgoyne, Daniel Hardiker and Neil Hetherington (ZEROH), Mark French, Caleb Madden, Luke Herriott, Cath Tajima-Powell, Joule Arts and Events, Fay McConnell-Heaps.

Pureprint, Fastprint, Martel, Rock-a-Nore fisheries and Sonny Elliott, The Masonic Hall, Kino Teatr, British Heart Foundation, Buddy's computers, Voodoo Sirens, Cash Generator, Borough Wines, London & South Eastern Railway Limited, CAW Accountancy, St Michael's Hospice, MenCap, Sara Lee Trust, HARC and Shelter.

Venue partners St Mary in the Castle, The Printworks, SEED, Shipwreck Museum and Electric Palace Cinema.

A big thank you to Hastings Independent - our media sponsor for 2017

Hastings Independent



**COASTAL CURRENTS
ARTS FESTIVAL**
HASTINGS & ST LEONARDS

2017

**Sweet
and
Dandy**

Coastal Currents 2017
is devised and managed
by Sweet & Dandy Ltd.
sweetanddandy.co.uk

With thanks to The Arts
Council England, Hastings
Borough Council and the
East Sussex Arts Partnership.



Dover Strait (V - VII detail) 050°51'25.92"N/000°36'04.32"E

each panel (of 7) 1.50 x 1.00m



FEARFUL SYMMETRY by GIBSON-COWAN

EXHIBITION
23.09.17 - 11.11.17

GALLERY HOURS
tuesday - sunday
10:00 - 16:00

the blackShed gallery

Robertsbridge TN32 5NG +44 1580 881247 theblackshedgallery.org.uk

CONTENTS

- 6 Opening Party**
- 8 Curated Programme**
- 10 Exhibition - Elpida Hadzi-Vasileva**
- 12 Public Art - ZEROH**
- 14 Exhibition - Tom Dale**
- 16 Public Art - Greg Shapter**
- 18 Performance - Warrior Square Conveniences**
- 23 Exhibition - After Hours**
- 24 Artists' Films at SEED**
- 26 Performance - La Verita Dance Company**
- 28 Intervention - Guy Bigland**
- 30 Exhibition - Fiona Grady**
- 32 Installation & Performance - Riz Maslen**
- 33 Performance - Louise Ashcroft**
- 34 Performance - Ray Lee**
- 36 Kids Workshops - Beastie**
- 38 Film Programme**
- 43 Public performance - Hunt & Darton**

45 Exhibitions and Events

46 MAP

66 Open Studios

- 67 Bexhill**
- 68 St Leonards**
- 83 Hastings**
- 93 East of Hastings**
- 95 Rye**

98 How to get here

Coastal Currents 2017 is devised and managed by Sweet & Dandy Ltd.

Sweet and Dandy Ltd cannot be held responsible for accident or injury at events and activities organised by external individuals and groups during Coastal Currents 2017. Details correct at time of going to press. Check coastalcurrents.org.uk for latest information.

Large print versions are available on request
email tina@coastalcurrents.org.uk



MULTI MEDIA EVENT

Curated in partnership with Caleb Madden

SOUND ART
INSTALLATIONS
PERFORMANCES

OPENING PARTY ST MARY IN THE CASTLE

1.9.17

8-11

FREE ALL WELCOME

JOIN US IN THIS
CELEBRATION OF THE
OPENING OF THE
2017 FESTIVAL
ORGANISED

FOR YOUR PLEASURE



AFTER PARTY

@ THE PRINTWORKS

9-LATE

FREE

ALL WELCOME

beatnik

P
THE PRINTWORKS
HASTINGS

An introduction to the Curated Programme

2017 sees Coastal Currents presenting a wide range of work curated by a number of partners who all look at the notion of changing how we view our spaces.

Coastal Currents has been focusing on developing what it does best; programming accessible art in the form of exhibitions, performances, interventions, workshops and immersive experiences which all serve to help us look at our surroundings very differently, Reinvigorating spaces, creating venues from the ordinary and transforming perceptions of well known corners of the town, the Festival looks to enliven, surprise, question, inform and delight.

This year we have invited back Lone Twin known in Hastings for the boat project that caught the imaginations of the town, to again spark creative thought - this time in the minds of 6 to 10 year olds and Ray Lee, a treat on the senses, both providing multiple chances to see these performance pieces on your doorstep. Greg Shapter has been working to unveil a bespoke commissioned outdoor piece of art in Silverhill and Elpida Hadzi-Vasileva known for her breathtaking pieces at the Brighton Festival and Venice Biennale will create something very special for Hastings.

As well as bringing International artists into the town to encourage them to be inspired by the area and leave a legacy, the Festival takes its responsibility to local artists very seriously, with over 30 new commissions in 2015 and this year is no different.

From the Opening party to another incredible piece by ZEROH, Riz Maslen at Borough Wines, Hastings Filmmakers with Mark French and this year, Hastings based guest curator Greig Burgoyne who has produced a programme within the curated programme concerned with Elsewhere.

Elsewhere could describe those spaces that are outside the norm and as such form the context and inspiration for all of the work in Greig's section of the curated programme, challenging our preconceptions about spaces around us. The artists he has chosen look at how to evoke the notion of "betweenness", and how this can affect our thinking, understanding and sense of place.

All in all, we are extremely proud to present Coastal Currents Arts Festival programme for 2017 and we hope you immerse yourself in a month-long celebration of the culture of 1066 country.

PAGE 43

GET INVOLVED

HUNT & DARTON'S NOT GREAT BRITISH BAKE OFF

Saturday 2 September at 2pm - FREE

Join a team and make an absurd cake, outdoors on the Stade.



PAGE 40

BOOK NOW

ALL AT SEE

Friday 8 September at 8pm - FREE

Hastings Filmmakers present their new films. coastalcurrents.org.uk/film



PAGE 38

BOOK NOW

HAND ME DOWN

Friday 18 September at 8pm - FREE

8 new super 8 films by Hastings based filmmakers with live score by Non-Blank. coastalcurrents.org.uk/film



PAGE 41

BOOK NOW

HEAR NOW

Thursday 22 September at 8pm - FREE

A new film by Mark French featuring a legendary performance by musicians Trevor Watts, Veryan Weston, Hannah Marshall and Alison Blunt. coastalcurrents.org.uk/film



PAGE 36

BOOK NOW

BEASTIE - KIDS WORKSHOP

Saturday 2 and Sunday 3 September
10 - 11.30am, 1 - 2.30pm, 4 - 5.30pm - £6

Beastie is an innovative participatory performance for children aged 6 - 10. coastalcurrents.org.uk/beastie



PAGE 34

BOOK NOW

SIREN BY RAY LEE

Thursday 14 and Friday 15 September at 8pm
and Saturday 16 September at 6pm and 8pm - £6

A whirling, spinning spectacle of mechanical movement, electronic sound and light featuring a forest of large metal tripods. coastalcurrents.org.uk/raylee



ELPIDA HADZI-VASILEVA*Reoccurring Undulation VI, 2017***Shipwreck Museum, Rock-a-Nore Rd, Hastings, TN34 3DW****Private View: Saturday 2 September 6-8pm****Exhibition runs from Saturday 2 September
to Sunday 1 October****FREE**

The internationally acclaimed Macedonian artist Elpida Hadzi-Vasileva will showcase *Reoccurring Undulation VI* at the Shipwreck Museum in Rock-a-Nore. *Reoccurring Undulation* is made from fish skin tiles and was originally commissioned for Towner, in Eastbourne, as part of *Compulsive, Obsessive, Repetitive* (2011).

The material was selected through a process of engagement with the locality, its landscape and history. Membranes and skins are recurring obsessions in Elpida's work, taking dead waste materials and transforming them through repetition into new artefacts that demonstrate the latent beauty of this discarded matter. Elpida often endures weeks/months of repetitive and nauseating labour to create her work. It is precisely this repetition that creates an imaginative space, opens up possibilities and allows the work to evolve.

Elpida Hadzi-Vasileva presented *Haruspex* commissioned by the Vatican, as part of the Pavilion of the Holy See, at the 56th International Art Exhibition, La Biennale di Venezia.

Other recent exhibitions include: *Angels and Animal Delights*, St John's Waterloo, London; *An Intimate Gaze*, Danielle Arnaud Gallery, London; *Making Beauty*, Djanogly Gallery, Nottingham (2016).

Public collections include The Vatican; Office of Public Works, Ireland; Križanke, Ljubljana; Casoria Contemporary Art Museum, Napoli, Italy; Middlesbrough Institute of Modern Art; Osten, Skopje, Macedonia and New Hall Art Collection, Cambridge.

elpihv.co.uk

DANIEL HARDIKER and NEIL HETHERINGTON (ZEROH)

Wavelength

Bottle Alley, Hastings/St Leonards seafront, TN37 6BZ

Launching on Friday 1st September
Throughout the Festival

FREE

Wavelength will be a site specific visual experiment in Bottle Alley, a unique space that joins Hastings with St Leonards and one now synonymous with ZEROH and Coastal Currents after the success of Point of Decay in 2015.

A half mile long and subterranean, its position and narrow width provide an acute sense of perspective. Generally under-used, this space is an inspired example of recreational beach-side architecture that we will reinvigorate once again.

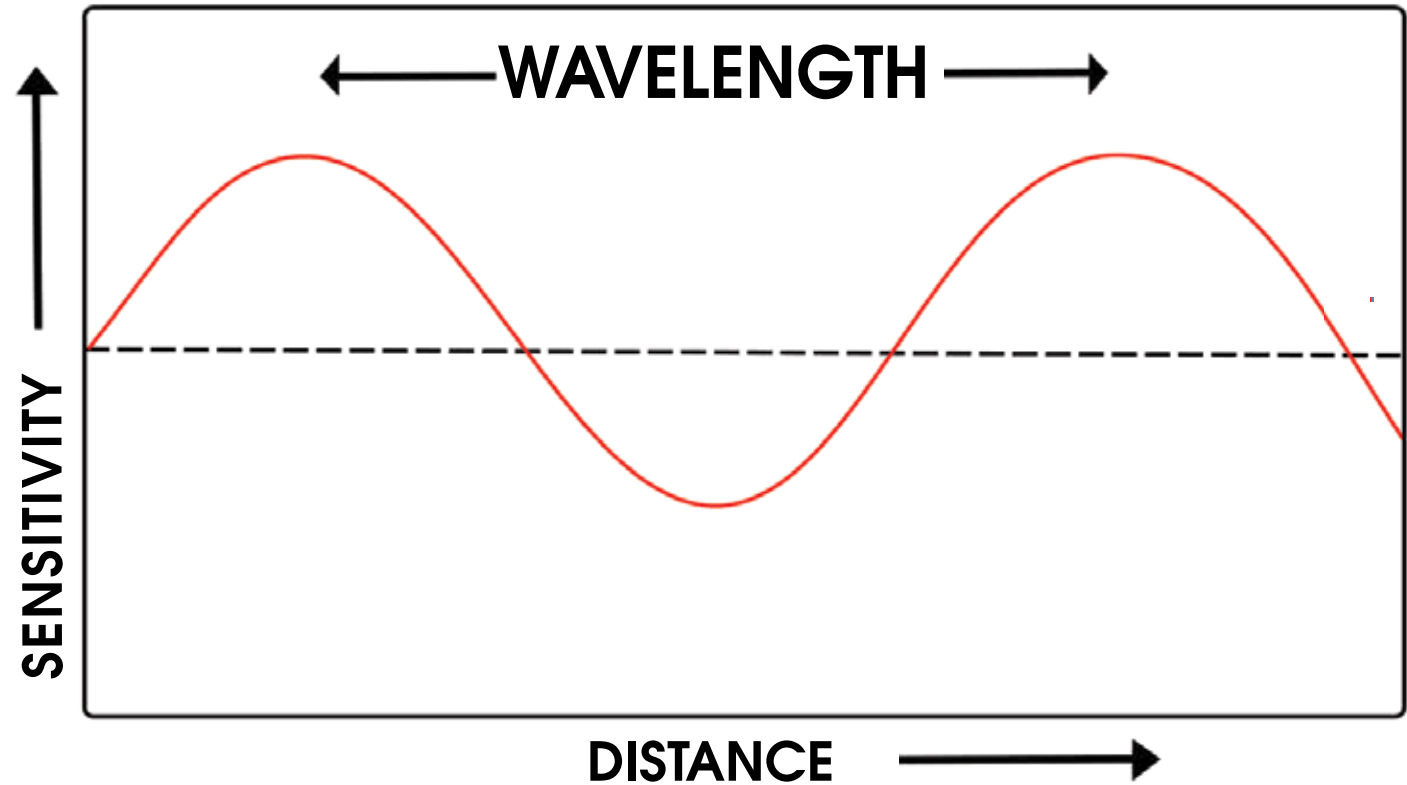
This piece will colourise the entire length of the space, creating a bold, immersive installation that attempts to challenge the user experience transporting you from a un-conventional walk way into an environment designed to evoke an emotional response.

Wavelength will focus on interaction and response from the linear bound audience as they cut through a changing colour landscape of concrete and beach. The piece will be animated by the audiences passage through the space as the columns create coloured frames of the seascape. An attempt at forging mood and contemplation within a tonally adjusted space. The concrete walls and ceiling will be subject to a myriad of subtle changes as the light of the day develops and reflects the colours onto the hard white concrete.

The piece will also challenge the notion of permanence, while *Point of Decay* was designed to break down and decay as a result of the bracing coastal weather, the longevity and permanence of this piece will be defined by how the piece is perceived and embraced by our community and whether or not a piece of this scale does have a permanent place in our rapidly changing traditional sea side town.

Wavelength will challenge conventional attitudes and create a debate about its own life span, we welcome this discussion as it prompts wider questions about the presence and role of permanent art in Hastings.

zeroh.net



TOM DALE*Department of the Interior***The Masonic Hall, West Ascent,
St Leonards on Sea, TN38 0DR****Private View: Thursday 7 September 6-8pm****Thursday 7 September 11am - 5pm****Friday 8 September 10am - 5pm****Saturday 9 September 10am - 5pm****Sunday 10 September 10am - 4pm****FREE**

Department of the Interior is a 6.5m high black leatherette bouncy castle that mocks, with absurdity, both institutional and architectural claims for authority.

It is a sculpture that is simultaneously seductive and repulsive; its form and the space within no longer the preserve of inclusive childish pleasures.

They speak instead of adult power games and BDSM practices that are normally played out in spaces concealed from public view.

In spite of the castle's tactile allure, visitors are strictly forbidden to enter and bounce, forcing them instead to imagine who or what might have that privilege and why.

Like Franz Kafka's character 'K' - attempting to enter a fictional castle only to be thwarted by invisible and inexplicable governance - *Department of the Interior* exemplifies the frustration and futility that governance and bureaucracy often pose at an individual and collective level.

Born in Kendal, a Goldsmiths graduate and former Doctoral researcher at Anglia Ruskin University, Dale's solo exhibitions include the John Hansard gallery and NIMAC, Cyprus, presented film, sculpture, performance and installation.

Dale has just completed a short film *A Cage for Voices* for Channel 4.

daletom.com

GREG SHAPTER

Single Point Perspective piece

Throughout the Festival

Silverhill

FREE

Greg Shapter is a sculptor who grew up in the small artist community Carmel. Surrounded by art and like-minded individuals he was always interested in finding new ways to express concepts already familiar to the viewer, thus encouraging him or her to re-evaluate that concept.

Originally working with 2D mediums such as pencil, pen, ink and paint, he found them limiting so looked to use materials such as wood, concrete, glass, plastic, and fiberglass instead as mediums of 3D sculpture. Added to this, Shapter developed a great interest in techniques that emit light, such as neon tubing, LED's, lasers, and even fire.

Commissioned with filling a derelict wall whilst being immersed in the vibrant architectural industry in London, Shapter created a new type of public art piece set on different planes which he called 'Single Point Perspective'.

Coastal Currents has commissioned Shapter to create a new site-specific piece which will be installed in the Silverhill area. Keep your eyes peeled.

gregshapter.com



WARRIOR SQUARE CONVENIENCES

Join us each weekend for a performance atop the public toilets at Warrior Square - seafront side of the main road. Some are durational and some are repeated but all will make you see this unused space in a new light.

GREIG BURGOPYNE

ISLAND WORKOUT

A durational performance testing relations between body and space

Sunday 3 September from 1pm

**On top of Warrior Square Public Toilets
(Warrior Square Seafront)**

FREE

Burgoyne's practice unites process-led, rule-based repetition, endurance, accumulation and duration. Burgoyne seeks to test or expand alternative relations between body and site with regard to space and thinking. Be they absurd or beguiling, Burgoyne proposes new dialogues and frameworks that seek to generate a condition of becoming, translation and flux instead of stasis; a site of experience rather than merely location.

The chosen site is an elevated, in-between space; buffeted by the sea and passed by a constant flow of traffic. Burgoyne will seek to immerse us in its island-like status, something of a drifting Raft of the Medusa, whilst acknowledging its position as the roof of public toilet and all that this may evoke.

The performance and subsequent film to be shown in the window of the British Heart Foundation shop located on the seafront will see Burgoyne and his colleagues move back and forth, following the changing, sporadic rhythms of the traffic and tides while emphasising the limits of the space. The static toilet roof becomes a turbulent site, seemingly swaying and rocking as an absurd keep-fit workout of sorts ensues.



Greig Burgoyne was born in Glasgow, Scotland; he studied at the HAK Vienna and Royal College of Art London. Recent projects 2016/17 included *Quadraturin* La confection Idéale Tourcoing France; *Breathing Space* in collaboration with La Verita Dance Company Brussels at Centre Culturel Balavoine France; *Draw to Perform 3* London; *Scapelands* DrawingBox Tournai (B); *WhiteNoise* Centre for Recent Drawing London; *GapFillers* Briggait project spaces 1+2 Wasps Glasgow; *FAX* Karst Plymouth curated by The Drawing Centre New York

Projects in 2017 include *Embodied Cartographies* Fringe Arts Bath; *WhiteNoise* published by Marmalade Visual theory-launch at RIBA London; *Close encounters* commissioned by The Stove Network Scotland; *P/ROPS* Ghent Belgium; *State of Line- survey of Contemporary Drawing Artworks* 1830 gallery Halifax.

greigburgoyne.com

MATT MAHONY-PAGE**Saturday 9 September from 1pm**

On top of Warrior Square Public Toilets

FREE

South East Kent and London based Matt Mahony-Page is currently studying an MA in Contemporary Art Practice: Performance at the Royal College of Art in London.

"I think what created a point of entry for performance within my work was disliking the subject to begin with and also how comfortable I sometimes felt in making videos.

Video was a turning point for me as it created issues that needed to be resolved. Some of these issues were of authorship and control."

Working in and around the live event, Mahony-Page's performances address the subject of labour, questioning its value and self-determining its exchange.

"Often resulting in anticlimactic but inevitable finishes, so-called 'meeting points', between myself and the chosen objects or materials."

With labour in mind, the work tends to have a strong sense of task-doing or fulfilling of an objective, this is usually carried out through absurd but sometimes playful means, with undertones of failure, futility, human condition or hardship.

"The performance will use specific materials and actions relating to these types of exchanges. I aim to take on or rather embody these somewhat unfair or dead-end exchanges."

www.mattmahony-page.com

**KIMVI NGUYEN****Saturday 16 September from 1pm**

On top of Warrior Square Public Toilets

FREE**SIGN FOR PEACE**

Kimvi will perform simple actions by using a pair of white flags created from cotton handkerchiefs tied to individual branches. The white flags are to signify to all that an approaching negotiator is unarmed, with a desire to communicate.

The Flag semaphore method, adopted and widely used in the maritime world (from the Greek, sema, meaning sign and phero, meaning bearer) is a telegraphy system conveying information at a distance by means of visual signals. Information is encoded by the position of the flags; it is read when the flag is in a fixed position.

Each letter spelled out will be held in position as long as possible, before the next letter is created. This process will be repeated continually spelling out the word 'PEACE' until complete physical exhaustion.

Kimvi Nguyen is a Visual Artist based in Winchester, born in North Wales to Vietnamese parents she grew up in Southampton. Since graduating from Fine Art Sculpture at Winchester School of Art, Kimvi has continued to challenge her practise through creating site specific responses. These have included being Creative Den's first artist in residence in Tamnougalt, Morocco, NCCA artist in residence in St Petersburg, Russia, Solo Exhibition at VDU Gallery Kaunas, Lithuania and Performance collaboration as part of IPA International Performance week Venice, Italy.

www.kimvi.co.uk

LOUISE ASHCROFT

Sunday 24 September from 1pm

On top of Warrior Square Public Toilets

FREE

Monsters of the Deep: Sea Monster Band

In early maps of the world, drawings of sea monsters signified unknown marine territory, and since the beginning of cinema, such creatures have been rife in Hollywood. Today these beasts are experiencing a cultural renaissance, as images of washed-up monsters frequently go viral online.

Are they click-bait hoaxes striving for online attention, and if so, why has there always been this cultural need for 'monsters of the deep' as signifiers of otherness? Instead of answering this complex question, performance artist Louise Ashcroft has founded the rock band Monsters of the Deep and is organising a monster-movie music concert on the roof of a public toilet overlooking the waves, in the hope of summoning the creatures themselves. Exploring how we conjure monstrosity through sound, the performances will feature interpretations of soundtracks from monster action scenes in films like *It Came From Beneath the Sea* and *Attack of the Crab Monsters*. If you're a local musician or band who would like to take part please email monstersofthedeephastings@gmail.com.

Louise Ashcroft has exhibited at The Government Art Collection, Latitude Festival, Arebyte, AVU Prague, TEDx Hackney, Turner Contemporary, Modern Art Oxford and comedy festival The Boring Conference. She studied at Oxford University, Birkbeck and The Royal College of Art and was recently in residence at Tate Modern and Camden Arts Centre. Louise makes live performances, videos and installations reflecting upon cultural behaviours and traditions.

louiseashcroft.org**AFTER HOURS**

AS PART OF THE WARRIOR SQUARE CONVENIENCES PROJECT, THE FOUR PARTICIPATING ARTISTS WILL SCREEN VIDEO WORKS IN FOUR SHOP WINDOWS IN HASTINGS FROM DUSK TIL DAWN.

GREIG BURGOYNE WILL SCREEN A NEW PIECE CREATED FROM HIS PERFORMANCE ON THE OPENING WEEKEND. MATT MAHONY-PAGE, KIMVI NGUYEN AND LOUISE ASHCROFT WILL SCREEN ALREADY EXISTING MATERIAL.

GREIG BURGOYNE*British Heart Foundation***Hastings Furniture & Electrical Store.****40-41 White Rock, Hastings, TN34 1JL**

Burgoyne will show an evolving durational work/film called *Island workout*; a performance made on the first weekend of the festival, set within the raised space above the Warrior Square conveniences. Burgoyne will be seeking to immerse us in its island like status. The film shows the live performance, which sees Burgoyne along with other participants move back and forth following the changing, sporadic rhythms of the traffic and tide, bringing this tempo into the space. The resulting film sees a static toilet roof become a turbulent site seemingly swaying and rocking, as the absurd keep-fit workout unfolds.

greigburgoyne.com**MATT MAHONY-PAGE***Cash Generators***40-41 Queens Road, Hastings, TN34 1RE**

"The setting, I think, is important when approaching video work and the eventual actions that go into it. I'll actively seek areas which the live setting of my performance can't satisfy, areas of public disinterest or out of the public gaze but still within the public domain".

mattmahony-page.com**KIMVI NGUYEN***Buddy's Computers***188 Queens Road, Hastings, TN34 1RG**

TOURIST
TRAVELER
EXPLORER
ARTIST

Kimvi's personal struggle with drawing and an interest in markmaking enables performative actions to manifest within her creative process. She often uses her body to create the mark or be the mark itself.

kimvi.co.uk**LOUISE ASHCROFT***Voodoo Sirens***60 George Street, Hastings, TN34 3EE**

Seaside Screensavers

The bizarre alter egos of your chip shop favorites, the sausage and the fish, feature in these humorous animated screensavers by Louise Ashcroft, possessing the monitor in the window of a Hastings shop.

louiseashcroft.org

EXHIBITION

Curated in partnership with Greig Burgoyne

Artists' Film at SEED

50 George St, Hastings, TN34 3EA

Thursday to Sunday
Throughout the Festival
4pm until close

FREE

The artist's will also be displaying prints of their work for sale.

Over three weeks, SEED will be home of three inspirational film artists, Zoe Richardson, Charlotte Bradley and Catinca Malaimare. All chosen for their beautifully engaging pieces, these films will be shown on a loop in the SEED tapas and cocktail bar on George Street, creating an atmospheric environment and transforming the space.

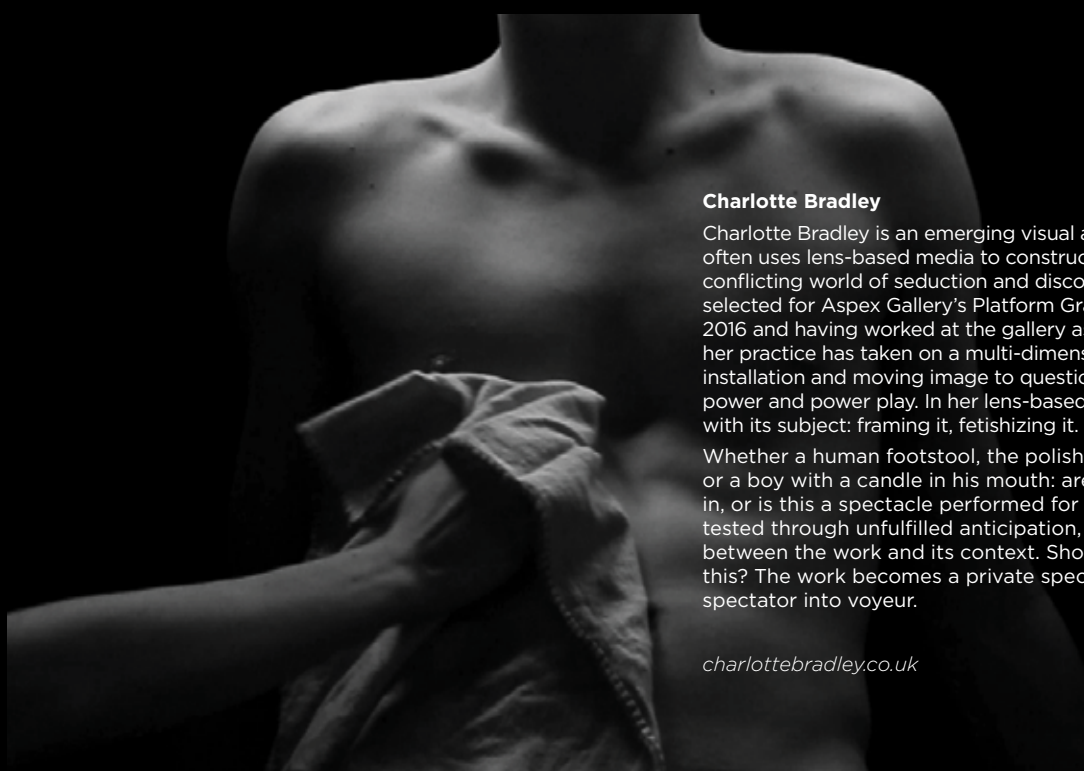
Please drop in each week and immerse yourself in each of these talented young artists' moving-art worlds.

seedhastings.co.uk

Zoe Richardson

The self, the mask and ideas of identity form the conceptual axis of Zoe Richardson's practise. Working mostly in film and photography to explore these ideas, Richardson takes herself as the subject, and within this exposes vulnerabilities and anxiety. The self (herself) presented masked or unmasked, hidden or revealed creates a highly personal viewing experience, but one in which collective contemporary concerns about identity and self-image are raised. The suggestive violence to the body and/or face present in the work is enhanced through the use of edits and fades, light and shadow. While the work can make for an uncomfortable and challenging watching, the viewer becoming implicated as a possible voyeur, they also captivate and hold ones attention, leaving a lasting image that can haunt.

zmrichardson.com



Charlotte Bradley

Charlotte Bradley is an emerging visual artist, whose work often uses lens-based media to construct a window into a conflicting world of seduction and discomfort. Since being selected for Aspex Gallery's Platform Graduate exhibition in 2016 and having worked at the gallery as an artist-in-residence, her practice has taken on a multi-dimensional approach, using installation and moving image to question perceived roles of power and power play. In her lens-based work, the camera flirts with its subject: framing it, fetishizing it.

Whether a human footstool, the polishing of a male torso, or a boy with a candle in his mouth: are we drawn to peer in, or is this a spectacle performed for us? As thresholds are tested through unfulfilled anticipation, a friction develops between the work and its context. Should we be watching this? The work becomes a private spectacle, transforming spectator into voyeur.

charlottebradley.co.uk

Catinca Malaimare

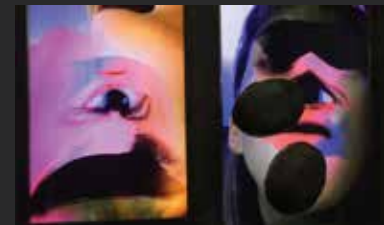
The sequence included in Coastal Currents Arts Festival presents a female body in a technological landscape.

A feedback loop is created by a continuous screening of short films where meanings start to shift until the series of short films start to be experienced as a larger narrative. The short films touch upon the subject of codified data extracted from the body through new technologies, in a medical sense where the exposed body is guided through a considered and controlled environment, and in equal measure through the union between the technological and the organism.

The female figure that dominates the films is always recorded live, moving through a media saturated context, the performances bring together ideas of a guerrilla statement, the exploration of space and interface through a minimalist movement.

Entanglements of body and technology happen in a considered environment and the integration of body and space is both of real and virtual nature to the point where we lose sight of which is which.

imagesmatter.co.uk



LA VERITA DANCE COMPANY

Stade Open Space, 20 Rock-A-Nore Rd, Hastings, TN34 3DW

Saturday 9 September, from 7.30pm

FREE

LA VERITA present CURRICULUM VITAE - In real time

La Verita is a contemporary Belgian dance company that explores and expands current dance language and performance. Incorporating current issues with extremes in dance movement, La Verita takes the audience on a mesmerising and exhilarating journey.

This is a piece coming out of today's reality. Curriculum Vitae traces the journey of a group of people who have to leave, or choose to leave their own country, for whatever reason.

Moving from one country to another can change a life, and essentially, change a person. Sacrifice is a necessary evil. Is that something of yourself that existed or rather a feeling that was hidden deep inside of you? Denial comes first, then follow contrasts and false expectations.

You arrived... and now what? An unreal scenery, the new place is like all other places. Taking this decision for your own self, guilt is an inevitable companion along the way. What are the repercussions on the environment left behind? Is that a betrayal to the previous life?

In 2015 LA VERITA was awarded the first prize in the competition 'Lendemains qui dansent' competition and have performed as far afield as South Korea, Germany, France, Luxembourg, Belgium, Switzerland, Israel, Czech Republic, Italy, Spain, Greece and Cyprus.

laveritadance.com



GUY BIGLAND - THE WRITTEN WORD

Hastings Independent Newspaper

**Throughout the Festival
FREE**

Guy Bigland has been commissioned to produce a new piece of work which will be printed in the pages of the Hastings Independent throughout the festival.

Bigland sees words as raw material to be collected and organised by the mechanics of rule-based systems. He explores language as a site of both potential and limitation. His work establishes parameters that combine logic and precision with arbitrariness and playfulness.

Since completing his BA & MFA at Bath Spa University, recent group exhibitions include *By the Rules*, Salisbury Art Centre (2015); *Complicity: Artifice & Illusion*; Collyer Bristow, London (2016); *The Order of Things*, The Wilson, Cheltenham (2017).

He has work in public and private collections in the UK and the USA.

guybigland.com

THIS TEXT PROVIDES THE READER WITH INSTRUCTIONS FOR MAKING A SOLUTION PAINTING IF FOLLOWED CORRECTLY THE INSTRUCTIONS WILL ENABLE THE READER TO BECOME A WRITER OF A SPECIFICATION FOR A SOLUTION PAINTING IF FOLLOWED INCORRECTLY THE TEXT MAY STILL ENABLE THE READER TO BECOME A WRITER OF A SPECIFICATION FOR A SOLUTION PAINTING THE WRITER MAY THEN CHOOSE TO BECOME A MAKER OF THE SOLUTION PAINTING AS DIRECTED BY THE WRITTEN SPECIFICATION HOWEVER THE WRITER MUST OBTAIN PERMISSION FROM THE ARTIST TO BECOME A MAKER OF A SOLUTION PAINTING WHICH WILL ON COMPLETION BECOME THE WORK OF THE ARTIST IF THE MAKER FINDS IT NECESSARY DURING THE MAKING PROCESS TO MAKE ANY DECISIONS THAT ARE NOT COVERED BY THE INSTRUCTIONS IN THIS TEXT THE MAKER WILL MAKE SUCH DECISIONS IN RESPONSE TO THE MATERIALS BEING USED THE SPIRIT OF THE INSTRUCTIONS AND THEIR OWN SENSIBILITIES AND PREFERENCES THE SPECIFICATION WILL CONTAIN THE FOLLOWING INFORMATION THE MATERIAL FOR THE SUPPORT THE SIZE OF THE SUPPORT THE COMPOSITION OF THE PAINTING THE COLOURS OF THE PAINT THE METHOD OF APPLICATION OF THE PAINT THE TITLE OF THE PAINTING THE POSITION THAT THE PAINTING WILL BE HUNG ON THE WALL AND THE PRICE OF THE PAINTING ALL THESE DECISIONS WILL BE MADE USING THE NUMBERS IN A SUDOKU PUZZLE SOLUTION PRINTED IN A DAILY NEWSPAPER A SUDOKU PUZZLE SOLUTION CONSISTS OF A NINE BY NINE GRID OF EIGHTY ONE EQUALLY SIZED SQUARES EACH SQUARE CONTAINING A NUMBER BETWEEN ONE AND NINE THE MATERIAL ON WHICH THE PAINTING WILL BE PAINTED WILL BE DECIDED BY THE NUMBER IN THE FIRST SQUARE THIS NUMBER WILL BE ONE OR TWO OR THREE OR A FOUR OR FIVE OR SIX OR SEVEN OR AN EIGHT OR NINE IF THE NUMBER IS ONE THE SURFACE WILL BE TEXTILE IF THE NUMBER IS TWO THE SURFACE WILL BE BOARD IF THE NUMBER IS THREE THE SURFACE WILL BE HARDWOOD IF THE NUMBER IS A FOUR THE SURFACE WILL BE METAL IF THE NUMBER IS FIVE THE SURFACE WILL BE PLASTIC IF THE NUMBER IS SIX IT WILL BE CARD IF THE NUMBER IS SEVEN THE SURFACE WILL BE GLASS IF THE NUMBER IS EIGHT THE SURFACE WILL BE PAPER IF THE NUMBER IS NINE THE SURFACE WILL BE A WALL THE PAINTING WILL BE SQUARE THE VERTICAL AND HORIZONTAL DIMENSIONS OF THE PAINTING WILL BE DECIDED BY THE NUMBERS IN THE THIRTY FIRST THIRTY SECOND AND THIRTY THIRD SQUARES THESE NUMBERS READ AS A THREE DIGIT NUMBER WILL BE THE HORIZONTAL AND VERTICAL MEASUREMENTS OF THE PAINTING IN MILLIMETRES THERE WILL BE NINE DIFFERENT TYPES OF COMPOSITION THE COMPOSITION WILL DIVIDE THE SURFACE INTO TWO OR MORE DISTINCT AREAS THE COMPOSITION WILL BE DETERMINED BY THE NUMBER IN THE FORTY FIRST SQUARE WHICH IS ALSO THE CENTRE SQUARE IF THE NUMBER IS ONE THEN A LINE WILL BE DRAWN THAT JOINS ALL THE NUMBER ONES EXCLUDING THE ONE IN THE CENTRE SQUARE TO CREATE AN EIGHT SIDED SHAPE IF THE NUMBER IS TWO THEN EIGHT LINES WILL BE DRAWN TO JOIN THE CENTRE TO ALL THE OTHER NUMBER TWOS THE LINES WILL CONTINUE TO THE EDGE OF THE SURFACE TO CREATE EIGHT AREAS IF THE NUMBER IS A THREE A LINE WILL BE DRAWN FOLLOWING THE GRID LINES OF THE PUZZLE TO ENCLOSE ALL THE OTHER NUMBER THREES TO CREATE A DISTINCT CENTRAL SHAPE WITH SOME PERIPHERAL SHAPES IF THE NUMBER IS FOUR A LINE WILL BE DRAWN FROM THE TOP TO THE BOTTOM OF THE SURFACE THAT TAKES THE SHORTEST POSSIBLE ROUTE TO CONNECT ALL THE NUMBER FOURS TO CREATE TWO DISTINCT AREAS IF THE NUMBER IS A FIVE A LINE WILL BE DRAWN FROM THE LEFT TO THE RIGHT OF THE SURFACE THAT TAKES THE SHORTEST POSSIBLE ROUTE TO JOIN ALL THE NUMBER FIVES TO CREATE TWO SEPARATE AREAS IF THE NUMBER IS A SIX A LINE WILL BE DRAWN STARTING AT THE TOP LEFT CORNER AND MOVING FROM LEFT TO RIGHT TO JOIN THE TOP THREE NUMBER SIXES THEN MOVING FROM RIGHT TO LEFT TO JOIN THE MIDDLE THREE SIXES THEN AGAIN LEFT TO RIGHT TO JOIN THE LOWER THREE NUMBER SIXES AND THEN CONTINUING TO THE BOTTOM RIGHT CORNER TO CREATE TWO SEPARATE AREAS IF THE NUMBER IS A SEVEN A LINE WILL BE DRAWN STARTING AT THE TOP LEFT CORNER AND MOVING FROM TOP TO BOTTOM TO JOIN THE LEFT THREE NUMBER SEVENS THEN MOVING FROM BOTTOM TO TOP TO JOIN THE MIDDLE THREE SEVENS THEN AGAIN FROM TOP TO BOTTOM TO JOIN THE RIGHT THREE NUMBER SEVENS AND THEN CONTINUING TO THE BOTTOM RIGHT CORNER TO CREATE TWO SEPARATE AREAS IF THE NUMBER IS AN EIGHT A LINE WILL BE DRAWN STARTING AT THE TOP RIGHT CORNER AND MOVING FROM RIGHT TO LEFT TO JOIN THE TOP THREE NUMBER EIGHTS THEN MOVING FROM LEFT TO RIGHT TO JOIN THE MIDDLE THREE EIGHTS THEN AGAIN RIGHT TO LEFT TO JOIN THE LOWER THREE NUMBER EIGHTS AND THEN CONTINUING TO THE BOTTOM LEFT CORNER TO CREATE TWO SEPARATE AREAS IF THE NUMBER IS A NINE A LINE WILL BE DRAWN STARTING AT THE TOP RIGHT CORNER AND MOVING FROM TOP TO BOTTOM TO JOIN THE RIGHT THREE NUMBER NINES THEN MOVING FROM BOTTOM TO TOP TO JOIN THE MIDDLE THREE NINES THEN AGAIN TOP TO BOTTOM TO JOIN THE LEFT THREE NUMBER NINES AND THEN CONTINUING TO THE BOTTOM LEFT CORNER TO CREATE TWO SEPARATE AREAS THERE WILL BE TWO COLOURS THE COLOURS WILL BE CHOSEN FROM A LIST OF ALL AVAILABLE ACRYLIC PAINTS THAT HAVE THREE DIGIT CODES ASSIGNED BY THE MANUFACTURERS OF THE PAINTS THE THREE DIGIT CODES ARE PRINTED ON THE MANUFACTURERS COLOUR CARDS ALONGSIDE THE PAINT NAMES THE CODE OF THE FIRST COLOUR IS GIVEN BY THE NUMBERS IN SQUARES FORTY FORTY ONE AND FORTY TWO THE CODE OF THE SECOND COLOUR IS GIVEN BY THE NUMBERS IN SQUARES FORTY NINE FIFTY AND FIFTY ONE IF EITHER OF THESE THREE DIGIT NUMBERS DO NOT MATCH ANY PAINT CODE THE NEAREST NUMERICAL MATCH WILL BE CHOSEN IF A PAINT IS UNAVAILABLE IT MAY BE SUBSTITUTED BY A DIFFERENT PAINT WITH THE NUMBER CLOSEST TO THE NUMBER OF THE SPECIFIED PAINT IF THERE ARE TWO OR MORE PAINTS THAT HAVE THE SAME CODE THEN ONE MUST BE CHOSEN BY WHATEVER MEANS SEEMS APPROPRIATE THE METHOD OF PAINT APPLICATION OF THE FIRST COLOUR WILL BE DECIDED BY THE NUMBER IN THE EIGHTY FIRST SQUARE THE PAINT APPLICATION METHOD FOR THE SECOND COLOUR WILL BE DECIDED BY THE NUMBER IN THE SEVENTY SECOND SQUARE EACH APPLICATION METHOD IS DEFINED BY A VERB ALTHOUGH SOME OF THE VERBS ARE ALSO NOUNS BUT THEY SHOULD BE READ AS VERBS AND NOT AS NOUNS IF THE NUMBER IS ONE THE APPLICATION METHOD WILL BE BRUSH IF THE NUMBER IS TWO THE APPLICATION METHOD WILL BE SPREAD IF THE NUMBER IS A THREE THE APPLICATION METHOD WILL BE ROLL IF THE NUMBER IS A FOUR THE APPLICATION METHOD WILL BE DRAG IF THE NUMBER IS A FIVE THE APPLICATION METHOD WILL BE SMEAR IF THE NUMBER IS A SIX THE APPLICATION METHOD WILL BE SQUEEZE IF THE NUMBER IS A SEVEN THE APPLICATION METHOD WILL BE POUR IF THE NUMBER IS AN EIGHT THE APPLICATION METHOD WILL BE SPATTER IF THE NUMBER IS A NINE THE APPLICATION METHOD WILL BE IMPRESS THE TITLE OF THE PAINTING WILL BE A SINGLE WORD TAKEN FROM THE PAGE OF THE NEWSPAPER ON WHICH THE SUDOKU PUZZLE SOLUTION IS PRINTED THE FORTY FIRST NUMBER DETERMINES WHICH WORD WILL BECOME THE NAME OF THE PAINTING START COUNTING THE WORDS FROM THE TOP LEFT CORNER OF THE PAGE BUT ONLY COUNT WORDS THAT ARE PARTS OF SENTENCES DO NOT COUNT WORDS THAT FORM HEADLINES BANNERS OR SECTION HEADINGS IF THE NUMBER IN THE FORTY FIRST SQUARE IS A ONE THEN COUNT ONE WORD AND THAT WORD WILL BE THE TITLE OF THE PAINTING IF THE NUMBER IN THE FORTY FIRST SQUARE IS A TWO THEN COUNT TWO WORDS AND THAT WORD WILL BE THE TITLE OF THE PAINTING IF THE NUMBER IN THE FORTY FIRST SQUARE IS A THREE THEN COUNT THREE WORDS AND THAT THIRD WORD WILL BE THE TITLE OF THE PAINTING IF THE NUMBER IN THE FORTY FIRST SQUARE IS A FOUR THEN COUNT FOUR WORDS AND THAT FOURTH WORD WILL BE THE TITLE OF THE PAINTING IF THE NUMBER IN THE FORTY FIRST SQUARE IS A FIVE THEN COUNT FIVE WORDS AND THAT FIFTH WORD WILL BE THE TITLE OF THE PAINTING IF THE NUMBER IN THE FORTY FIRST SQUARE IS A SIX THEN COUNT SIX WORDS AND THAT SIXTH WORD WILL BE THE TITLE OF THE PAINTING IF THE NUMBER IN THE FORTY FIRST SQUARE IS A SEVEN THEN COUNT SEVEN WORDS AND THAT SEVENTH WORD WILL BE THE TITLE OF THE PAINTING IF THE NUMBER IN THE FORTY FIRST SQUARE IS AN EIGHT THEN COUNT EIGHT WORDS AND THAT EIGHTH WORD WILL BE THE TITLE OF THE PAINTING IF THE NUMBER IN THE FORTY FIRST SQUARE IS A NINE THEN COUNT NINE WORDS AND THAT NINTH WORD WILL BE THE TITLE OF THE PAINTING IF THIS METHOD SELECTS A WORD THAT HAS ALREADY BEEN USED TO NAME ANOTHER SOLUTION PAINTING THEN MOVE ON TO THE NEXT WORD IF THAT NEXT WORD HAS ALREADY BEEN USED AS A TITLE FOR ANOTHER SOLUTION PAINTING THEN MOVE TO THE NEXT WORD KEEP DOING THIS UNTIL A WORD PREVIOUSLY UNUSED TO TITLE A SOLUTION PAINTING IS SELECTED THE POSITION IN WHICH THE PAINTING WILL BE HUNG ON A WALL IS DECIDED BY THE NUMBERS IN SQUARES NUMBER THIRTY TWO FORTY ONE AND FIFTY THESE THREE NUMBERS FORM A VERTICAL LINE IN THE CENTRE OF THE PUZZLE BY READING THE NUMBERS FROM TOP TO BOTTOM GIVES AN X COORDINATE AND READING THEM FROM BOTTOM TO TOP GIVES A Y COORDINATE THE ENTIRE AREA AVAILABLE FOR HANGING THE PAINTINGS WILL BE MEASURED AND DRAWN TO SCALE ON GRAPH PAPER WITH ONE THOUSAND UNITS ON EACH AXIS THUS DIVIDING THE AREA INTO A MILLION UNITS THE POSITION OF EACH PAINTING WILL BE MARKED ON THE GRAPH PAPER WITH THE GIVEN COORDINATES BEING THE CENTRE OF THE PAINTING IF ANY TWO PAINTINGS OVERLAP ONE MAY BE MOVED IN ANY DIRECTION TO AVOID THE OVERLAP IF THE DESIGNATED CENTRE OF A PAINTING WILL PLACE THE PAINTING ACROSS A CORNER IT MAY BE MOVED TO THE LEFT OR TO THE RIGHT SO THAT IT IS NOT ACROSS A CORNER IF THE DESIGNATED CENTRE OF A PAINTING WILL PLACE THE PAINTING SO THAT ITS LOWER EDGE SHOULD BE LOWER THAN THE BOTTOM OF THE WALL IT MAY BE MOVED UP JUST ENOUGH SO THAT THE LOWER EDGE IS NOT LOWER THAN THE BOTTOM OF THE WALL IF THE DESIGNATED CENTRE OF A PAINTING WILL PLACE THE PAINTING SO THAT ITS UPPER EDGE SHOULD BE HIGHER THAN THE TOP OF THE WALL IT MAY BE MOVED DOWN JUST ENOUGH SO THAT THE UPPER EDGE IS NOT HIGHER THAN THE TOP OF THE WALL THE PRICE OF THE PAINTING WILL BE DECIDED BY THE NUMBERS IN THE THIRTY FIRST THIRTY SECOND AND THIRTY THIRD SQUARES THESE THREE NUMBERS READ AS A THREE DIGIT NUMBER WILL BE THE PRICE OF THE PAINTING IN POUNDS STERLING



AA-ZZ 2014 (detail) Digital print / photo: Benjamin Owen

Solution Text - 2016 Digital Image

FIONA GRADY

St Mary in the Castle,
Pelham Crescent,
Hastings, TN34 3AF

12 September until 1 October 10am - 4pm

FREE

'FRACTURED VISIONS'

Fiona Grady creates large site-responsive drawings on walls, windows and floors using sequences of dispersing geometric shapes. Her practice recognises the relationship between architecture, installation art and decoration.

For her exhibition at St Mary in the Castle, she will be creating a new site-specific installation using digital projections; and will also present a series of related works on paper. The exhibition 'Fractured Visions' will be directly inspired by the architecture of the crypt gallery; containing drawings that are created from observations of the building and also drawings that are made by the building.

"The drawings will interpret the negative space of the internal corridors, arches and vanishing points. They will emphasise the repetition of structure; highlighting the ambient surroundings. The patterns identified in these drawings, will be mimicked in the second element of the exhibition a digital projection, contained within the rear crypt. The projection will display fractured blocks of light, that cut across the surface of the stone walls to emphasise the notion the building is a vessel that dictates and fragments our vision."

Fiona Grady lives and works in London. Her public commissions include Deptford Rail Station, Leeds Town Hall and Scarborough Old Town Prison. She has had solo exhibitions at The Art House, Wakefield, and Ad Hoc in Germany. Later this year, she will be participating in a collaborative drawing exhibition at Wimbledon Space and a solo exhibition for Coventry Biennial.

fionagrady.co.uk



RIZ MASLEN

Borough Wines, 34 Robertson St, Hastings, TN34 1HT

Saturday 16 September 11 - 11pm

Sunday 17 September 12 - 5pm

Live Performance: Saturday 16th September 8.30pm

FREE

From the Elsewhere by Riz Maslen

"I breathed a sigh of relief/That shook the mountain down"

Riz Maslen has had an extraordinary career so far – playing live at Coachella and the Montreaux Jazz Festival, composing for Kew Gardens and the English National Opera, and releasing work on a who's who of independent labels including R&S/Apollo, Oxygen Music Works and Ninja Tune. But scratch beyond those beginnings and an extraordinary trajectory emerges – of an artist building an aesthetic that breathes both electronically and organically, in which can be heard jazz, folk, psychedelia and post-rock, alongside those electronics, samples and field recordings which characterise her early output.

From the Elsewhere will be a new sonic work from Riz Maslen, drawing on the other and the elsewhere. A place of unknowing, is there somewhere in-between our realities and dreams and if so, what would it be like? The layers of sound will reveal themselves and become immersive allowing the listener to conjure up their own image of The Elsewhere.

boroughwines.co.uk**LOUISE ASHCROFT - Unlucky Dip**

Southeastern Trains between Hastings and St Leonards

Saturday 16 & Sunday 17 September

FREE, for train ticket holders only

Performance artist Louise Ashcroft transforms the coastal train between Hastings and St Leonards into a seascape of sounds and spoken word, as she roams the carriages with a large suitcase of interactive props and instruments, immersing travellers in sonic narratives based on classic marine-themed monster movies like *Creature from the Haunted Sea* and *The Beast from 20,000 Fathoms*. Why do the seas and oceans have such enduring power as catalysts for tales of myth and menace?

Louise Ashcroft has exhibited at The Government Art Collection, Latitude Festival, Arebyte, AVU Prague, TEDx Hackney, Turner Contemporary, Modern Art Oxford and comedy festival The Boring Conference. She studied at Oxford University, Birkbeck and The Royal College of Art and was recently in residence at Tate Modern and Camden Arts Centre. Louise makes live performances, videos and installations reflecting upon cultural behaviours and traditions.

louiseashcroft.org

SIREN by Ray Lee

St Mary in the Castle, 7 Pelham Crescent, Hastings, TN34 3AF

Thursday 14 September, 8pm

Friday 15 September, 8pm

Saturday 16 September, 6pm

Saturday 16 September, 8pm

£6

Booking in advance advisable as numbers very limited
coastalcurrents.org.uk/raylee

Sited within the atmospheric auditorium of St Mary in The Castle, Ray Lee's award-winning *Siren* is a whirling, spinning spectacle of mechanical movement, electronic sound and light featuring a forest of large metal tripods, whose rotating arms emit an extraordinary chorus of pulsing electronic drones.

Silent performers move within the mass of swirling metal, operating their machines and tuning electronic oscillators to change the musical composition while dodging and ducking the spinning arms. The closeness of the tripods' tuning sets off a series of amazing overtones that evoke the sense of an ethereal choir.

As the audience move freely around the installation the sound pulses past them creating a hypnotic sound world and a compelling visual image.

Ray Lee is a composer, artist, and performer. He was awarded British Composer of the Year for Sonic Art in 2012. Lee's work investigates his fascination with the hidden world of electromagnetic radiation and in particular how sound can be used as evidence of invisible phenomena. He is interested in the way that science and philosophy represent the universe. He creates spinning, whirling, and pendulous sound installations that explore "circles of ether," the invisible forces that surround us.

invisible-forces.com

SPECIAL KIDS EVENT

Curated in partnership with Home Live Art



BEASTIE by Lone Twin

There's a creature on the loose in Hastings

Stade Hall, 20 Rock-A-Nore Rd, Hastings, TN34 3DW

Let your children's imaginations run wild at this fantastic kids workshop

Saturday 2 and Sunday 3 September

Six special workshops for kids:

10 – 11.30am,

1 – 2.30pm,

4 – 5.30pm

£6

Book online at coastalcurrents.org.uk/beastie

Who's that hiding around the corner? What's that moving on the beach? Did you just see what I saw? Take a magical adventure with Lone Twin who last visited Hastings with their spectacular Boat Project in 2013.

Inspired by the imagination of young people, Beastie is an innovative participatory performance for children aged 6 – 10.

Beastie is a special experience for children only, so parents will need to drop off their child at the Stade Hall (the starting location) and then pick them up 90 minutes later. The kids share a jaw-dropping secret and take charge as they create their own stories

and explore their surroundings hand-in-hand with a very special new friend.

The result is a playful, active and engaging experience for small groups of 12 children, accompanied by chaperones at all times. Beastie outings will involve the children going outside so please provide appropriate clothing and dress for the weather!

Directed by Gregg Whelan and Gary Winters, Lone Twin are acclaimed for making an ever diverse range of intimate, hopeful and entertaining projects. Beastie combines this extensive theatrical experience with Gregg and Gary's work writing for children's television.

"Beastie really captured the children's imagination."

Please note that workshops are only for children but parents and supervisors are welcome to have a cup of tea perhaps at Eat cafe opposite whilst children are in the workshops.

HAND ME DOWN

8 new super 8 films with live score by Non-Blank
Kino-Teatr, Norman Road, St Leonards on Sea, TN38 0EQ
Friday 15 September 8pm

FREE

Seats limited so reservation is a must
coastalcurrents.org.uk/film

8 Hastings based filmmakers shoot 8 rolls of super 8 film in the Charity shops of 1066 country.

Each filmmaker will go on a journey with an object/s chosen from a charity shop, finally re-donating it back to the shop at the end. Expect transformative recycling.

2017 is the continuation of the Super 8 submissions project using real film, first presented in the 2013 Festival.

Filmmakers include: Catharine Brown, Nichola Bruce, Anonymous Bosch, Ben Cole, Maika Crampton, Richard Heslop, Andrew Kotting and Mauricio Vincenzi.

Performed with a live soundtrack by NON-BLANK & Fritz Catlin.

**Screenings in Charity shops
Throughout the Festival**

We would like to give special thanks to

St Michael's Hospice (St Leonards),

MenCap (St Leonards),

Sara Lee Trust (Hastings),

HARC (St Leonards & Hastings),

Shelter (St Leonards), who have supported the Festival.

Please visit them all, watch the films and buy or donate!





ALL AT SEE HASTINGS FILMMAKERS



ALL AT SEE
New work by Hastings Filmmakers
Electric Palace Cinema,
39a High St, Hastings, TN34 3ER
Friday 8 September, 8pm
FREE
Seats limited so reservation is a must
coastalcurrents.org.uk/film

Hastings is a hotbed of filmmaking activity with many well-known filmmakers based here, producing a constant stream of new and innovative work. This is an exciting opportunity to see a selection of their latest short films, introduced by the directors themselves.

PREMIERE

HEAR NOW
An evening with Trevor Watts & Veryan Weston
Kino-Teatr, Baker Mamonova Gallery, Norman Road,
St Leonards on Sea, TN38 0EQ
Thursday 22 September, 8pm
FREE
Seats limited so reservation is a must
coastalcurrents.org.uk/film

A new film by Mark French featuring a legendary performance by musicians Trevor Watts, Veryan Weston, Hannah Marshall and Alison Blunt. Recorded at Café Oto earlier this year and re-mixed by Trevor to make an extraordinary new piece of music.
This is followed by a live performance of Trevor & Veryan's "Quantum Illusion" project. As a duo they have been at the cutting-edge of improvised music for many decades, from Trevor's inception of the Spontaneous Music Ensemble in the 60's to recent collaborations demonstrated in the accompanying film.
Free music at its most visceral and tender, a roller coaster ride of note perfect emotions.

SWEET & DANDY PRESENTS
INTERNATIONALLY RENOWNED
BURLESQUE DANCERS



MISS BETSY ROSE

KITTY BANG BANG

TICKETS ONLY £15

WWW.SWEETANDDANDY.CO.UK/TICKETS

THE PRINTWORKS | 14 CLAREMONT | HASTINGS | TN34 1HA

SAT 9 SEP | 8PM-10.30PM

Sweet
and
Dandy

©
2017

P
THE PRINTWORKS
HASTINGS

NOT
GREAT BRITISH BAKE OFF

Stade Open Space Saturday 2 September, 2pm

Welcome back festival favourites, the inimitable Hunt and Darton who will host an interactive and unwieldy bake-off.

Prepare to be totally underwhelmed as the general public go head-to-head for one supreme crap baker to be crowned champion of H&D's **Not Great British Bake Off**.

Hunt & Darton as your hosts and adjudicators, have created a ridiculous set of rules and criteria to judge the cake creations. Is your cake tropical or absurd enough, how is it's movement literacy? What is the concept behind your cream topping?

Join in the baking or the ridiculous judging, build your team or arrive solo, either way join us at 2pm.

There is of course only one winner.

FREE and PARTICIPATORY



Sweet and Dandy
PRESENTS

HIP HOP

DJ

STATIS BEATNIK

BEATBOXER

BEATFOX

RAPPER

PHONETIC

SAT 9 SEP

10.30PM-LATE

THE PRINTWORKS

14 CLAREMONT | HASTINGS | TN34 1HA

TICKETS ONLY £7.50

WWW.SWEETANDDANDY.CO.UK/TICKETS



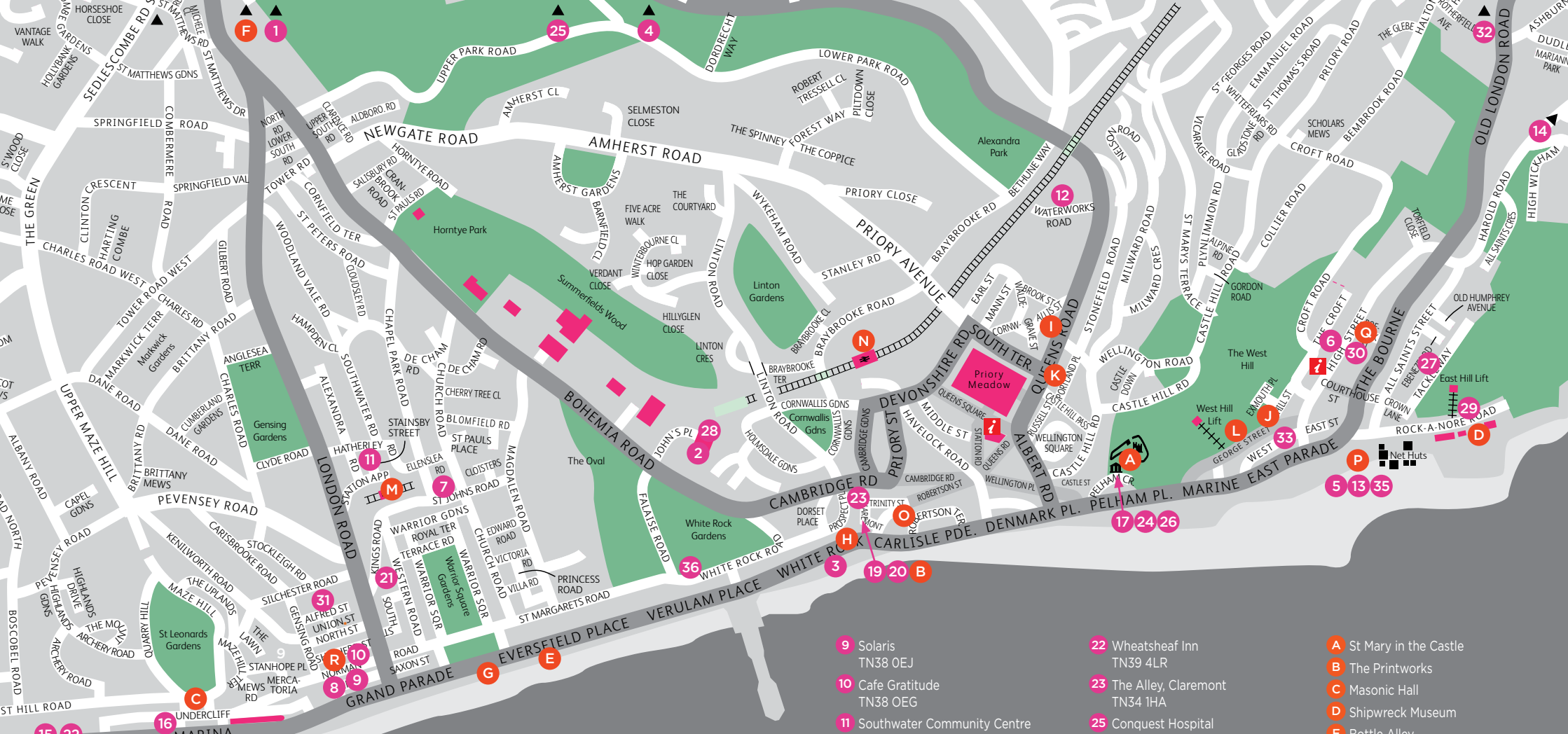
EVENTS AND EXHIBITIONS

2 September - 1 October

This section offers a fantastic range of exhibitions and events taking place throughout the festival dates, curated, organised and managed by the individuals themselves.

We would love you to share your experiences and photos from Coastal Currents by visiting our Facebook page [facebook.com/CoastalCurrents](https://www.facebook.com/CoastalCurrents) tweet us [@coastalcurrents](https://twitter.com/coastalcurrents) or send us an email at tina@coastalcurrents.org.uk

Please see the maps in the centre pages which guide you to all the festival locations.
[coastalcurrents.org.uk](https://www.coastalcurrents.org.uk)



EVENT LOCATIONS

This map covers most of the main events listed in the brochure. Our curated programme locations are marked by an orange dot.

Locations are approximate.

- 1 Cornershop Gallery TN33 OEG
- 2 28 Hastings Museum and Art Gallery TN34 1ET
- 3 Source Park TN34 1JL
- 4 Coffee Box TN34 2SA
- 5 13 35 The Stade TN34 3DW
- 6 Object d'Epoch TN34 3EL
- 7 The Space TN37 6HL
- 8 Arthur Tidy & Sons TN38 0EJ

- 9 Solaris TN38 0EJ
- 10 Cafe Gratitude TN38 0EG
- 11 Southwater Community Centre TN37 6LA
- 12 Britannia Enterprise Centre TN34 1RT
- 14 The Old Bakery TN35 5NG
- 15 18 34 Electro Studios TN38 0AL
- 16 Hastings Arts Forum TN38 0BU
- 17 24 26 St Mary in the Castle TN34 3AF
- 19 20 The Printworks TN34 1HE
- 21 Little Mashers Shop TN37 6DU

- 22 Wheatsheaf Inn TN39 4LR
- 23 The Alley, Claremont TN34 1HA
- 25 Conquest Hospital TN37 7RD
- 27 Tackleyway TN34 3BU
- 29 Rock-a-Nore Art Gallery TN34 3DW
- 30 Electric Palace TN34 3ER
- 31 Alfred Street TN38 0HD
- 32 Rye Creative Centre TN31 7LS
- 33 Blackmarket TN34 3EG
- 36 White Rock Hotel TN34 1JU

- A St Mary in the Castle
- B The Printworks
- C Masonic Hall
- D Shipwreck Museum
- E Bottle Alley
- F Martel Print
- G Warrior Square Conveniences
- H British Heart Foundation
- I Buddy's Computers
- J Voodoo Sirens
- K Cash Generators
- L SEED
- M Warrior Square Train Station
- N Hastings Train Station
- O Borough Wines
- P Stade Hall and Open Space
- Q Electric Palace Cinema
- R Kino-Teatr

In the lost harbour of kings...
 on the once derelict lands...
 a re-imagining... a re-telling...
 in stories and images...
 the White Rock...
 America Ground

MSL presents

STORYLINES

In partnership with Rock House MSL welcomes visitors to the 65 million year old "Rock Alley".

5 all new stories to hear.
5 artists to watch at work.

Sunday 10 September 12–6pm

Claremont, America Ground, Hastings, TN34 1HA

All ages. Free! But you will be invited to spend — on stories, arts and food — and take part in a digital treasure hunt.

Info: MSL Projects 01424 234000 / www.mslprojects.co.uk/ #storylineshastings  

© SARAHMACBETH.COM



Events

Dreams of Tanzania

Corner Shop Gallery,
 31 Mount Street,
 Battle,
 TN33 OEG

**Throughout the Festival
 Mon to Sat
 9.30am - 5pm**

A photographic exhibition celebrating the wildlife of The Serengeti, The Ngorongoro Crater and Lake Manyara.

stevesphotography@tiscali.co.uk
steveboydellphotography.com
 07954 635921



Cash, Clash & Climate

Hastings Museum & Art
 Gallery,
 Bohemia Road,
 Hastings,
 TN34 1ET

**Throughout the Festival
 Tue to Sat 10am to 5pm,
 Sun 12pm to 5pm**

Cash, Clash & Climate by Maslen & Mehra in collaboration with local street artists Shuby and Delete. This large installation invites visitors to ponder the complexities of living today by posing questions about political, social and economic structures, social unrest and environmental issues.

museum@hastings.gov.uk
hmag.org.uk
 01424 451052



1

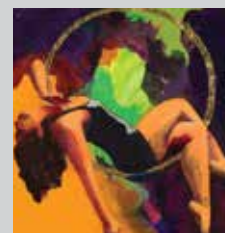
Origin

Source Park,
 (Under Hastings seafront),
 White Rock,
 Hastings,
 TN34 1JL

**Throughout the Festival
 Tue, Wed & Thu
 2pm - 10pm,
 Fri 2pm - 11pm,
 Sat 10am - 10pm,
 Sun 10am - 8pm**

Origin: Rise, beginning, the place or moment where something begins to exist. An exhibition of paintings by Rebecca Youssefi in the remarkable setting of the world's largest subterranean skate park. The Private View on Saturday 2nd September, 6-8pm, premieres a unique live performance. Please arrive early for the performance. The exhibition continues until Sunday 1st October.

ryoussefi@hotmail.co.uk
rebeccayoussefi.com
sourcebmx.com
 07751 683105



2

Faceless Exhibition

Coffee Box,
 The Hastings Centre,
 The Ridge,
 Hastings,
 TN34 2SA

**Throughout the Festival
 Mon - Fri 9am - 5pm
 Sat 9.30am - 11am**

The Global Slavery Index estimates that there are 45.8 million people currently in slavery: men, women and children, to you and me, faceless and nameless. Some are enslaved in Hastings today.

A collaboration between King's Church and Hastings Anti-Trafficking Hub, which raises awareness and supports victims of modern slavery locally. Faceless includes photographs and artwork from local artists at King's.

hello@kingshastings.org
kingshastings.org
 01424 755990



3

4

THE TEMPEST. THE SHORE.

A SCULPTURAL INSTALLATION BY BRIAN MANDER.



The Stade.
Hastings.
TN34 3FJ.

From Sunday 24th
Until Friday 29th
September 2017.

Events

Dazzleship NN201

The Stade,
Hastings Beach,
(Opposite the
Jerwood Gallery)
Hastings,
TN34 3DW

Throughout the Festival

The boat can be seen from dawn til dusk. Dazzleship NN201, a Hastings fishing boat will be painted in WW1 dazzleship camouflage, to highlight the role of the fishing community during both world wars. All welcome to the private view on Sep 1 (5pm - 7pm) and Coastal Currents Open Studio weekends, where you can meet the artist.

jayeho10@hotmail.com

jayeho.com



Colden Drystone 'New Gold Works'

Object d'Epoch / OD*E
Furniture and Interiors,
78 High Street,
Hastings, TN34 3EL

Throughout the Festival
Thu, Fri, Sat, 11am - 5pm
Sun 11am - 4pm

A selection of abstract gold paintings by performance artist, musician and painter Colden Drystone. Colden shows regularly with the Hannah Barry Gallery London, has work in The Saatchi Gallery Collection & recently completed a year as Artist in Residence at Cambridge University. This exhibition features gestural paintings made with clay, pigment, oil and spray paints.

coldendrystone@gmail.com

coldendrystone.tumblr.com

objectdeepoch.com

07931 314985



5

Residency365 @ The Space

The Space,
St Johns Road,
St Leonards on Sea,
TN37 6HL

(next to St Leonards Warrior
Square train station, behind
24/7 taxi rank)

Throughout the Festival

Visible from dawn until dusk. Working site responsively, Louise and Nicole create temporal interventions in 'borrowed' spaces. Collaborating over the past year, they have inhabited spaces in the UK, Belgium and France. Returning to St Leonards, they will be spending time during September inhabiting and responding to a new space with new possibilities. Details of events can be found at residency365.wordpress.com

Louise Kenward & Nicole Zaaroura

Follow on Twitter @Residency365

residency365.wordpress.com



6

Arthur Tidy & Sons

94 Norman Road,
St Leonards on Sea,
TN38 0EJ

Throughout the Festival
Sat & Sun 11am - 5:30pm
Window Cinema
9pm - 11:30pm

Sales of the Unexpected - Arthur Tidy & Son, the oldest surviving shopfront in Norman Road shall be offering an eclectic assortment of curios, garments, hand designed products, massage and art books. At night the shop shall become a window cinema alive with films from times gone by including *St. Leonard's Outrage, 1913. Damage caused by suffragettes.*

info@arthurtidy.co.uk

arthurtidy.co.uk

@arthurtidy



7

8

AFRIKABA²⁰¹⁷

Habib Koité

3pm Sun 22 Oct

St Mary in the Castle, Hastings, TN37 3AF

Legendary guitarist Habib Koité's unique guitar stringing offers African rhythms that at times sound close to blues and flamenco. Joined by Surahatta Susso, popular kora player, singer, younger brother to Seckou Keita. Children welcome.

All tickets on sale now!
(Limited No. of Conc., family and group tickets).

Caribbean food available for sale.
See www.Afrikaba.co.uk for details



Events

In Search of The Real: Lucent

Solaris,
76 Norman Road,
St Leonards on Sea,
TN38 0EJ

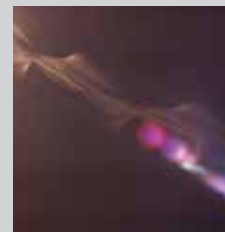
Throughout the Festival
Tue - Sat 1pm - 6pm

Lucinda Wells has spent three decades searching for the mysterious and luminous essence of being that has been described by seers and teachers throughout time. Using film and photography she compulsively explores the everyday to produce images that intrigue, going beyond the reality they represent. The mystery deepens with this series of enigmatic photographs investigating the space of darkness.

alex@solarisprint.co.uk

lucindawells.info

01424 427392



A Show of Feeling

Cafe Gratitude,
39 Norman Road,
St Leonards on Sea,
TN38 0EG

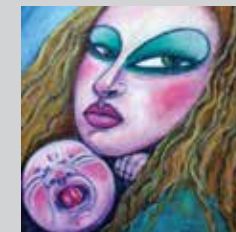
Throughout the Festival
Tue - Sat 10am - 4.30pm

Everyday is made up of moments of drama, either large or small, that create feelings of happiness or pain, fear or calm, sadness or joy, among many others perhaps too fleeting to identify. An exhibition of paintings and original prints by artist Fiona Pienkowska

fionapienkowska@yahoo.co.uk

fionapienkowska.com

07763 805581



9

Something Fishy Going On

Southwater Area
Community Centre,
1 & 2 Stainsby Street,
St Leonards on Sea,
TN37 6LA

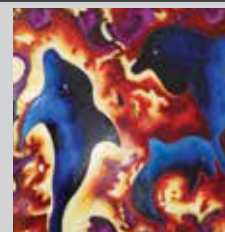
Wed 23 Aug - Wed 6
September 10am - 5pm
Private View 23 August,
6pm - 8pm

This show by Nick Hill consists of works around a maritime theme. The works are vibrant and colourful and will be shown along side Nick's more surreal pieces. Guest artists will include Lea, Trisha Oakland and Sue Wells. Some of the profits will go to the charity, Mind. Claire Hamill will be performing at the private viewing.

office@southwatercommunitycentre.org

southwatercommunitycentre.org

01424 461414



10

Performances and workshops at Hastings Actors Studio

Unit 13,
Britannia Enterprise Centre,
Waterworks Rd,
Hastings,
TN34 1RT

Performances at 7pm on:
2, 9, 16, 23 and
30 September.

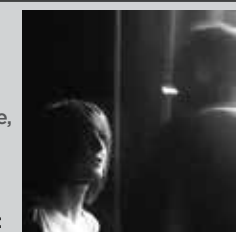
Introductory workshops at 6.30pm on: 5, 12, 19
and 26 September

A Kick In The Teeth, Joan of Arc and other stories Performances by members of the Hastings Actors Studio. Introduction to Meisner acting technique workshops: Learn the key principles that are the foundation the technique that enables actors to 'live truthfully in the given imaginary circumstances'. Fee for performances and workshops: pay what you can, in advance to confirm your place.

Info@hastingsactorsstudio.com

hastingsactorsstudio.com

07947 236435



11

11

12

12



FACELESS

AN EXHIBITION ABOUT MODERN SLAVERY BY KING'S CHURCH IN CONNECTION WITH HASTINGS ANTI-TRAFFICKING HUB.
AT COFFEE BOX, HASTINGS CENTRE, THROUGHOUT COASTAL CURRENTS. FREE ENTRY. SEE LISTING FOR DETAILS.

SHOWING THE MOST ECCLECTIC RANGE
OF FILM, MUSIC, THEATRE AND COMEDY

KINO-TEATR
CINEMA THEATRE



PLEASE VISIT OUR WEBSITE FOR MORE INFORMATION: kino-teatr.co.uk



Events

Beastie

Stade Hall,
The Stade,
Hastings,
TN34 3FJ

2 & 3 September
10 - 11.30am, 1 - 2.30pm,
4pm - 5.30pm

£6 book online at
coastalcurrents.org.uk/beastie

Six special workshops for kids. Beastie is an innovative participatory performance for children aged 6 - 10.

The Beastie project is a special experience for children only, so parents will need to drop off their child at the Stade Hall (the starting location) and then pick them up 90 minutes later.

See page 34/35 for more details

coastalcurrents.org.uk/beastie



CREATIVE WORKSHOPS: pearls, paint & fishleather

The Old Bakery Studio,
(rear building),
188 Harold Road,
Hastings, TN35 5NG

Sat 2, Sun 3 & Fri 8
September

Sat 2 FISHLEATHER
FLOWERS (Jane Fryers):

Learn to sculpt roses from salmon skin.

Sun 3 BEAD STRINGING (Julie Tucker-Williams):
Learn to string beads & pearls on knotted thread.

Fri 8 PAINTED FURNITURE (Melissa White):
Transform an old chair/stool with chalk paints,
pattern & distressing.

All workshops £48 (+ materials) including light refreshments. Max 10 people. See url below for full details of courses, tutors and material.

info@melissawhite.co.uk

bit.ly/workshopsinfo

01424 868048



13

Masks: an experimental installation

Electro Studios
Project Space,
Seaside Road,
St Leonards on Sea,
TN38 0AL

2 - 3 September
11am - 5pm

Masks have been used as protection, disguise, performance and entertainment since antiquity. SoCo Artists and friends present a collection of masks made from paper, wood, plastic, textiles, found materials, images or objects. SoCo Artists is a group of professional artists, based in East Sussex. The project encourages artists to experiment and work outside their usual practice.

sineidcodd@mac.com

soco.org.uk



14

Wayward IN RESPONSE TO . . .

The Crypt,
St Mary in the Castle,
7 Pelham Crescent,
Hastings,
TN34 3AF

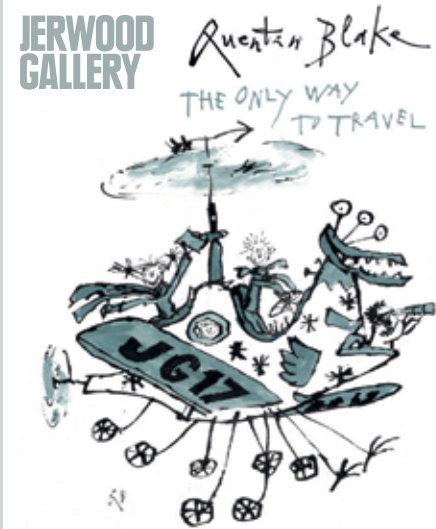
Mon 4 - Sun 10
September,
11am - 5pm

Six female artists present new work, engaging with the specific qualities of this unique and historic underground space.

waywardinfo@gmail.com

facebook.com/wayward

07888 854667



14 June -
15 October 2017
Rock-a-Nore Road
Hastings Old Town
TN34 3DW

jerwoodgallery.org
#BlakeOnlyWayToTravel

twitter.com/jerwoodgallery
facebook.com/JerwoodGallery
instagram.com/jerwood_gallery

Quentin Blake, *Will Get There Somehow*, 2017 © the artist

ELECTRIC PALACE

HASTINGS INDEPENDENT CINEMA AND ARTS VENUE

In the heart of
Hastings Old Town

See great films
Join our film clubs
Watch live events and meet
exciting guests
Hire us for fab parties

www.electricpalacecinema.com

15

16



THE PRINTWORKS HASTINGS

www.theprintworkshastings.com

stade saturdays EVENTS DURING COASTAL CURRENTS

Saturday 23rd September 2pm – 7pm

THE LANTERN SOCIETY PRESENTS

Trevor Moss & Hannah-Lou's present an afternoon of the finest folk, acoustic and roots music featuring Danny and the Champions of the World, The Siobhan Parr Trio, Moss Clarkson, Pepe Belmonte and many more!

Saturday 30th September 7.30pm

SKINNY LISTER



Stade Saturdays take place at
Stade Open Space, Rock-a-Nore
Road, Hastings, TN34 3FJ.



Events

Restless Images

Hastings Arts Forum
36 Marina,
St Leonards on Sea,
TN38 0BU

Tue 5 September -
Sun 17 September
11am - 5pm
Closed on Mondays



Restless Images is the second solo exhibition at the Arts Forum of around 60 new and recent artworks by local artist Ian Barraclough. If you're looking for something visually different there are a wide range of quirky and accessible themes and styles at affordable prices.

info@hastingsartsforum.co.uk

hastingsartsforum.co.uk

01424 201636

La Bohème

St Mary in the Castle,
7 Pelham Crescent,
Hastings,
TN34 3AF

Fri 8 September 7.30pm
and Sat 30 September
7.30pm and on tour
across the South East



Barefoot Opera bring their fresh, energetic ensemble style to one of the world's favourite operatic love stories, Puccini's La Bohème, an opera which champions youth and passion in a dark world. Featuring several young artists from the South East, including Lucy Ashton as Mimi, and Andras Jacobs on costume design. Director: Jenny Miller, Musical Director: Lesley Anne Sammons, Design: Jane Bruce.

barefoot.opera@gmail.com

barefootopera.com

01424 432985

Dandelion DELICATESSEN

From the Deli

- *Local and continental cheeses
- *Cured and Smoked meats
- *Dried goods to stack your shelves
- *Flavours from around the world



From the Kitchen

- *Hot and cold food to eat in and takeaway
- *Wines, Beers and Ciders
- *Meat, Vegetarian & diet specific options
- *Event and Office catering
- *Cakes and Sweet treats
- *Basement event space



14 Kings Road, St Leonards TN37 6EA
dandeliondeli.co.uk

Sweet and Dandy

Specialists in Arts Marketing
and Events

Strategy, Implementation, Artist Management,
Exhibitions, Private Views, Events, Launches, PR,
Identity, Copywriting, Print Design, Distribution,
Fundraising, Websites, SEO, Stakeholder Relations,
Digital Strategy, Social Networking, Logo Design.

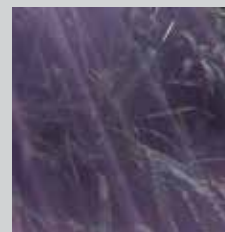
sweetanddandy.co.uk

17

Legally High

Electro Studios
Project Space,
Seaside Road,
St Leonards on Sea,
TN38 0AL

Sat 9 - Sun 17 September
Fri - Sun 12 - 5pm
Preview Fri 8 September
6pm - 8pm



Legally High is an exhibition showcasing the work of contemporary artists Alexandra Drawbridge, Gerard Hemsworth, Charles Koning, Anne Parfitt, and Toby Tatum.

Image: *Toby Tatum, The Signal, 2017, Video still.*

adrawbridge@hotmail.com

alexandradrawbridge.co.uk/news.html

07505 829227

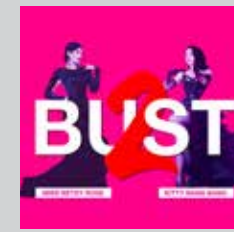
18

BUST II

The Printworks,
14 Claremont,
Hastings,
TN34 1HE

Sat 9 September
8.30pm - 10.30pm plus
HipHop DJ until late

£15 in advance - book
now as tickets limited



Sweet and Dandy presents: BUST II

After the success of last year, Kitty Bang Bang and Betsy Rose return with another blinding burlesque performance alongside other world class names. Expect classy dance in a beautiful setting. Burlesque as it should be.

sweetanddandy.co.uk/tickets

19

20



A Workers Co-operative Est. 1985

Trinity is proud to be supporting Coastal Currents 2017

- Five deliveries weekly of fresh organic fruit and vegetables.
- Local organic bread delivered daily.
- Delicious Trinity-made takeaway food.
- Wide range of organic wine.
- Extensive collection of dried fruits, wholegrains, nuts, pulses, cereals and flours.
- Chilled and frozen vegetarian and vegan foods.
- Natural remedies, toiletries and eco-friendly cleaning products.
- ...and so much more

Find out more at:
www.trinitywholefoods.co.uk
 or come and see for yourself at
3 Trinity Street, Hastings, TN34 1HG
 (opposite Hastings Library)

Tel: 01424 430473

Open: Mon-Sat
9.00am - 5.30pm



Events

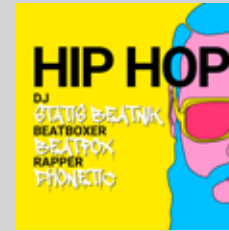
HIPHOP

The Printworks,
14 Claremont,
Hastings,
TN34 1HE

Sat 9 September
10.30pm until late
£7.50 - book now as tickets limited

HipHop DJ's, Beatboxers, Rappers and more as Sweet and Dandy takes over the Printworks for a late night HIPHOP event. Expect live performances, battles and classic hip hop tunes as well as some really contemporary twists.

sweetanddandy.co.uk/tickets



Little Mashers Screenprinting Workshops

Little Mashers Shop,
25 Kings Rd,
St Leonards on Sea,
TN37 6DU

Sat 9 September
11am - 4pm

Little Mashers will be running screenprinting workshops on two consecutive weekends. Sat 2nd and 9th Sept. Using stencils you will cut out your design and screen print with special chalkboard ink onto a T shirt, bag or canvas creating a blackboard which can be wiped clean and redrawn again and again.

info@littlemashers.com

01424 422786



21

2 artists:1 weekend

Wheatshaf Inn,
2 Barnhorn Road,
Bexhill on Sea,
TN39 4LR

Sat 9 - Sun 10, September
10am - 4.30pm

Two artists sharing a love of colour and light. Christine Verrijden using acrylic and palette knives, well known for her Norfolk scenes and winner of Best in Show at BAS summer exhibition 2016 and Vera Douglas who uses line and wash to create her watercolours of Bexhill. An unique opportunity to buy originals.

christineverrijden@gmail.com

christine.verrijden.com

01424 845753



22

Storylines

The Alley,
Claremont,
America Ground,
Hastings,
TN34 1HA

Sun 10 September
10am - 6pm

MSL presents *Storylines* in partnership with Rock House, welcoming visitors to the 65 million year old White Rock in the alley behind Claremont. Five all new stories to hear. Five artists to watch at work.

All ages. Free! But you will be invited to spend - on stories, arts and food - and take part in a digital treasure hunt.

storylines@mslprojects.co.uk

facebook.com/storylineshastings

01424 234000



23

24



SOLARIS PRINT

Fine Art & Photographic Printing

Run by creative people, our service is based on first-hand understanding of your needs. We take an individual approach, working with you to produce stunning archival prints.

76 Norman Road, St Leonards on Sea, East Sussex TN38 0EJ
www.solarisprint.co.uk 01424 427392

PROJECT 78 FRAMING Specialists in handmade bespoke picture frames

78 Norman Road St Leonards on Sea East Sussex TN38 0EJ | 01424 272 348 | www.project78framing.com

Events

An Imposition of Structure by Paul Bartholomew

Exhibition Area, Conquest Hospital, St Leonards on sea, TN37 7RD

Thu 14 September - Fri 17 November
Every day 9am - 6pm

Private View: Wed 13 September 6 - 8pm

Paul Bartholomew's paintings deliver poise, elegance and gorgeous colour. Working with geometric forms, he finds freedom of expression within their structural parameters - and is inspired by discovering the presence of this ancient concept across the spectrum of art and architectural history.

margaret.richards8@nhs.net
01424 754488 ext 2270



25

Roland Jarvis: Exhibition of work

Tackleway Hall, 39a Tackleway, Hastings, TN34 3BU

14 - 17 September
10am - 5pm

An opportunity to see work by the late Roland Jarvis, a multi talented and immensely active painter, printmaker, sculptor, photographer, and animation film maker. Roland died aged 90 in 2016. Work will be displayed in his original 60 foot long studio at his converted chapel home. Some will be shown for the last time so don't miss this unique exhibition!

sophiejarvismason@yahoo.com
rolandjarvis.com
07740 941734



27

Ray Lee

St Mary in the Castle, 7 Pelham Crescent, Hastings, TN34 3AF

Thu 14 & Fri 15 September at 8pm and Sat 16 September at 6pm (matinee) and 8pm

£6 book now at coastalcurrents.org.uk/raylee

Ray Lee is a composer, artist, and performer. He was awarded British Composer of the Year for Sonic Art in 2012. Sited within the atmospheric auditorium of St Mary in The Castle, Ray Lee's award-winning Siren is a whirling, spinning spectacle of mechanical movement, electronic sound and light.

coastalcurrents.org.uk/raylee



26

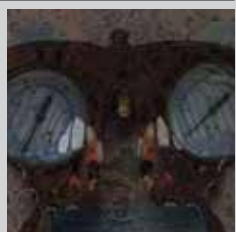
Changing Places

Hastings Museum & Art Gallery, Bohemia Road, Hastings, TN34 1ET

From 16 September
Tue - Sat 10am to 5pm,
Sun 12noon - 5pm

An exhibition of artists' video curated by FVU: Film & Video Umbrella, that links the industrial transformations across South Asia to buildings of historic significance in Britain. We are part of a nationwide tour and will host Residue by Desire Machine Collective, as well as a new commission by Imran Channa.

museum@hastings.gov.uk
hmag.org.uk
01424 451052



28



MURMURATIONS GALLERY

CONTEMPORARY FINE ART

Painting, Photography,
Sculpture, Ceramics,
Mixed Media, Prints



17a PARKHURST ROAD
BEXHILL - TN39 1DE

OPEN TUESDAY-SUNDAY
10:30am - 4:30pm

www.murmurationsgallery.co.uk
01424 272554

New Artists / Exhibitions welcomed
All mediums considered



Free Exhibitions

Until 3 September
Simon Patterson
Safari: an expedition
as exhibition

Until 8 October
Roy Voss
All The World's A Sunny Day

From 28 September
Roy Voss
The Way Things Are

www.dlwp.com

Events

Objects from the id XIII

Rock-a-Nore Art Gallery,
23 Rock-a-Nore Road,
Hastings,
TN34 3DW

Sat 16 - Sun 24
September,
Sat - Sun 11am - 5pm
Mon - Fri 1pm - 5pm



Group of artists
comprising Phillip Cosham, Agnieszka Dabrowska,
Peter Edwards, Tim Riddihough, Siobhan Tanner,
Anna Thomson plus invited artists.

This diverse group of artists, yet again, dive deep
into their seemingly limitless imaginations and
subconscious to bring you Objects from the id
XIII. Work includes painting, print, ceramics, glass,
photography, film, sculpture and the found object.

phillipcosham6@tiscali.co.uk

phillipcosham.co.uk

01424 444314

Resolutions

The Electric Palace,
39a High St,
Hastings,
TN34 3ER

Wed 20 September
5pm - 7pm

Conflict is a part of
living in groups and we
all have the power to
calm or inflame. The Craftimation Factory work
with young people to explore stories of conflict,
action and reaction through creative writing,
prop making and monologue films. Explore their
work at this showcase. Afterwards work will be in
various venues, please check the website below
for details.

janey@thecraftimationfactory.org

thecraftimationfactory.org

07535 279444



29



DESIGNER MAKERS
OF CONTEMPORARY AND
TRADITIONAL CRAFTS

Contemporary

CRAFT SHOW

De La Warr Pavilion
Bexhill-on-Sea

30 Sep - 1 Oct - 10.00 - 5.00



Admission:
adults £3.00
children free

De La Warr Pavilion, Marina,
Bexhill-on-Sea, East Sussex TN40 1DP
www.thesussexguild.co.uk



fastprint



LITHOGRAPHIC &
DIGITAL SPECIALISTS
01424 440204

www.fastprintheastings.com

Leaflets • Brochures
Business Stationery
Vinyl Stickers
Banners • Posters
Design Service & much more

4-6 Gensing Road, St Leonards on Sea,
East Sussex TN38 0ER
studio.fastprint@btconnect.com

ALF FEST III

11 Alfred Street,
St Leonards on Sea,
TN38 0HD

Sat 16 September
11am - 5pm

Hello, Diverse Art and live
music flood the lounge/
diner. Local creatives
warm the cockles.

Candle flickers In the rib cage. Grey matter
dances. Spectrum shape shifting and possibly
a cup of tea and a bun.

thadskews@hotmail.co.uk



31

30

New Road Artists Open Studios

Rye Creative Centre,
New Road,
Rye,
TN31 7LS

Fri 22 September
5.30 - 8pm & Sat 23
September 11am - 5pm

Over one night & one
day New Road Artists open their studios at Rye
Creative Centre. A rare opportunity to view & buy
a huge range of work, directly from the artists &
makers including painters, sculptors, printmakers,
photographer & textile artists. There will be a bar
on Friday, a cafe on Saturday & an exhibition in
the gallery space.

arts@ryecreativecentre.co.uk

ryecreativecentre.co.uk/artists

01797 229797



32

Art Supplies

Student/Beginner/Amateur/Professional

For a comprehensive range of artist materials available from our local retail shop

www.KingsStationers.co.uk

01424 437 136



Kings Stationers

Serving the local community for over 100 years 1-2 Alexandra Parade, Park Avenue, Hastings, TN34 2PQ

Events

Drew Copus - Stencil Workshop

Blackmarket VIP,
10 George street,
Hastings,
TN34 3EG

Sat 23 September
10am - 5pm

A one day drop in stencil workshop, hosted by local street artist Drew Copus. Create and design your stencil, inside the stunning new hallway painted by Drew himself. £5 per person, bring cash on the day and just turn up.

drewcopus@hotmail.co.uk

[instagram.com/droobie_art](https://www.instagram.com/droobie_art)



SEA ROAD: Exhibition

Electro Studios
Project Space,
Seaside Road,
St Leonards on Sea,
TN38 0AL

Sat 23, Sun 24,
Sat 30 September,
Sun 1 October 1pm - 5pm

Andrea G Artz, Colin Booth, Alexander Brattell, Karin-Marie Wach.

studio@colinbooth.com

electrostudiosprojectspace.co.uk

07804 141579



33

34

STABLES THEATRE & ART GALLERY

The Bourne, Hastings TN34 3BD. Box office telephone 01424 423221
Art Gallery open Mon to Fri 10.30am to 1pm, 6 to 8pm, Sat 10.30am to 1pm

Friday 7 and Saturday 8 July
THE ANNIVERSARY

Friday 21 to Saturday 29 July
LONDON SUITE

Friday 4 August
EMMA

Tuesday 8 to Saturday 12 August
BLUE REMEMBERED HILLS

Saturday 26 August
THE ROCKY HORROR PICTURE SHOW

Wednesday 30 August to Saturday 2 September
DAVID COPPERFIELD



www.stablestheatre.co.uk

The Tempest. The Shore. 2017 Outdoor exhibition

The Stade,
Hastings,
TN34 3FJ

Sun 24 - Fri 29
September

To be haunted by the drowned cries of a child, carried on the threatening gale, beneath the surge and shifting shingle on the beach, is to abjure the undying romance of the surrounding sea. Yet I cleave to the shore, and heave to the rope, tethering the distant sounding buoy. It will not break, will not succumb to the vast and silencing waters.

brianmander.1st@googlemail.com

brianmander.co.uk

twitter: @brian_mander

Instagram: @brianmanderartist

Facebook: *TheTempestTheShore*



Salsa and Lindy Hop Dance Day

White Rock Hotel,
White Rock,
Hastings,
TN34 1JU

Sat September 30
11am to midnight

Hastings Salsa and Cinque Ports Swing Jive bring you a day of workshops and social dancing. 11am - 6.30pm Salsa and Swing Dance workshops, 6.30pm - midnight Lindy Hop/Salsa party. Tickets: workshops and party £20, workshops only £15, party only £10. 20% Discount from Hastings Salsa, Cinque Ports Swing Jive and Phyre Dance events. For more information join Hastings Salsa on Facebook.

hastingsalsa@gmail.com

salsalindyhopdancedayhastings.eventbrite.co.uk

07790 698053



35

36

OPEN STUDIOS

The ever popular Open Studios return with an incredible selection of artists opening their homes and studios to create a fabulous set of trails for you to follow.

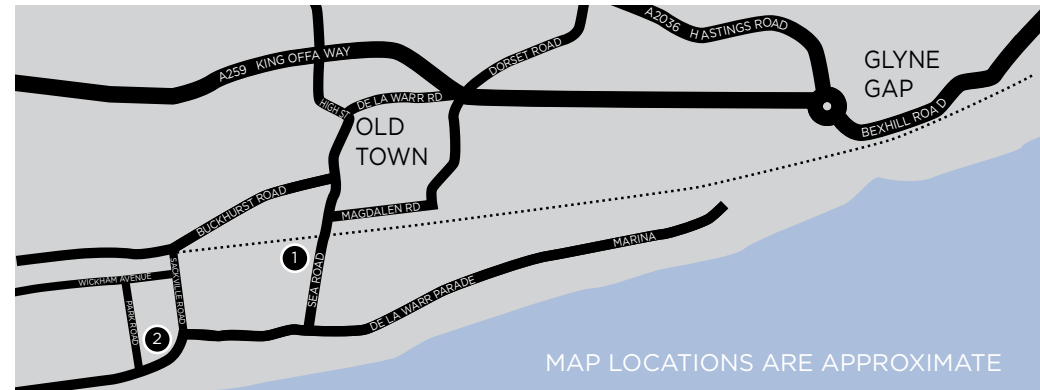
Stretching from Bexhill right through to Udimore taking in St Leonards, Hastings, Fairlight, Pett and Rye on the way, the Open Studios programme showcases a wide range of artists and makers, from this famously creative area.

Whether you talk to the artist, purchase a piece of work, commission something unique or just browse, these two weekends are a wonderful way to allow you a glimpse of how these artists live and work.

Opening times (unless otherwise stated)
2/3 & 9/10 September 11am - 6pm

Bexhill & Glyne Gap

Opening times (unless otherwise stated):
2/3 & 9/10 September 11am - 6pm



Art Studio 18

18 Sea Road, Bexhill, TN40 1ED
01424 552940

Art Studio 18 was opened in October 2016 by Francis Ives. There are currently 5 studio spaces in use by artists.

ARTISTS:

Ben Browton
www.theTOXICproject.co.uk

Sandy Bryan

Pia Carpenter

Maggie Connolly

Francis Ives
www.francisives.co.uk

Opening Hours: 2/3 & 9/10 September 11am - 6pm



Vicky Craggs

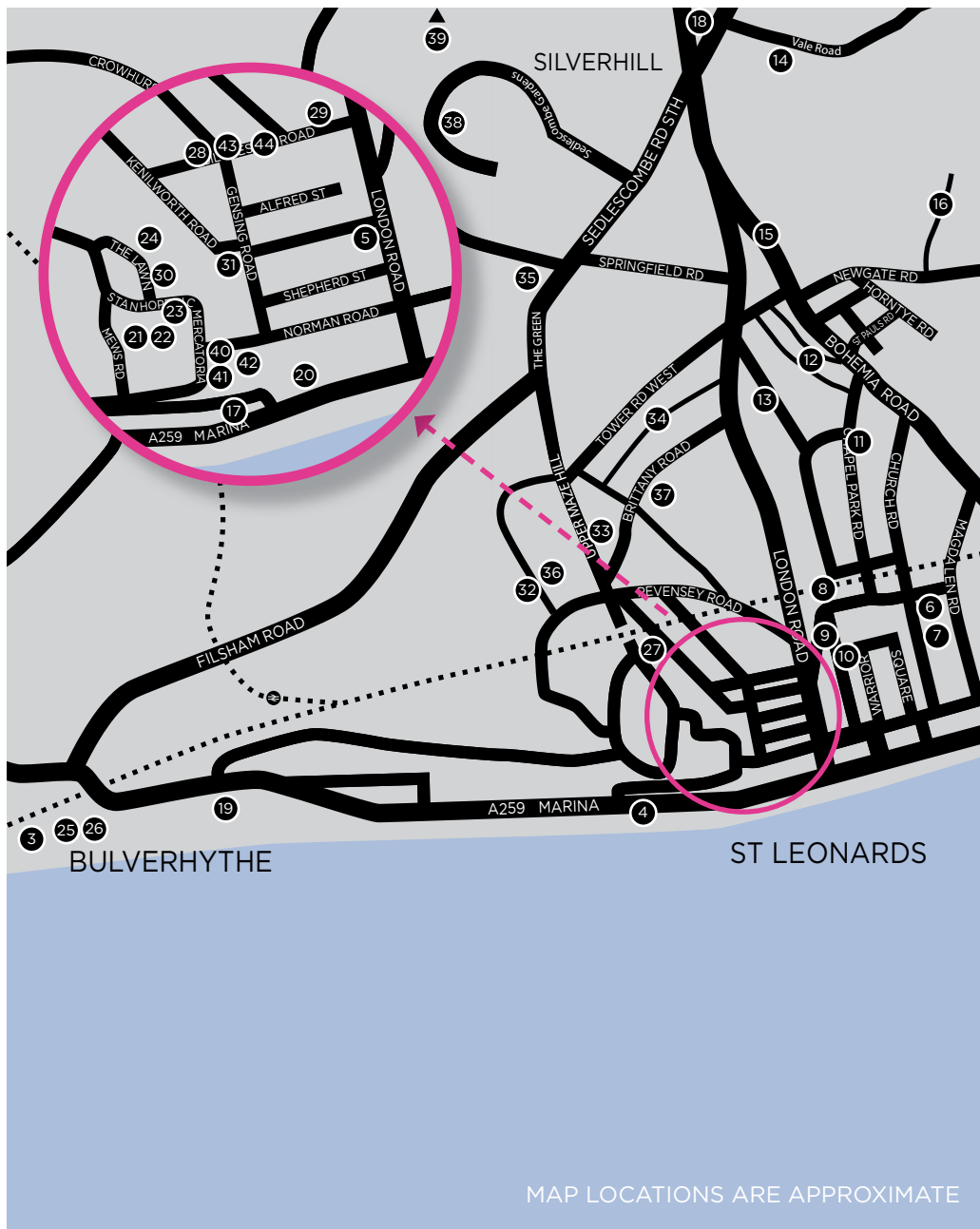
Flat 2, 33 Park Road, Bexhill, TN39 3HX
vicky.craggs@yahoo.co.uk 07462 547406

Visit probably the smallest but prettiest garden to see where inspiration is gained for my watercolours and acrylic paintings. Nature features heavily including flowers, wildlife, hares and dogs. Originals, prints & cards available.

Opening Hours: 3/9 & 10 September 11am - 5pm

St Leonards

Opening times (unless otherwise stated):
2/3 & 9/10 September 11am - 6pm



Beach Hut 33

Glyne Gap East, St Leonards on Sea, TN40 2JS
nice1penny@eastsussex.gov.uk pennynice.co.uk 07918 102394

Penny Nice uses the fantastically diverse East Sussex countryside, stunning coastline and human interaction with such a wonderful environment, as a constant source of inspiration for her watercolour and mixed media work. Vibrant colours are used to portray her view of this locality.

Opening Hours: 2/3 & 9/10 September 11am - 6pm

3



Beach Hut No.4

Beach Hut No.4, Marina Solarium, Left of the Azure, (Facing the sea)
hannahkynoch@yahoo.com hannahkynoch.co.uk 07590 431508

Hannah Kynoch - 'Point of view.' My new work describes my point of view when addressing the subject matter of 'self portraits'. Come and see my new and old work at my Beach Hut Studio. Opposite the Marine Court on the lower boardwalk.

Opening Hours: 2/3 & 9/10 September 11am - 6pm

4



Jo McAllister

Who's Wearing What boutique, 34 London Road, St Leonards on Sea, TN37 6AN
info@jomcallister.com jomcallister.com 07733 227127

Sumptuously textured jewellery hand made in fine silver and high carat gold. Jo McAllister's simple, striking jewellery has been widely exhibited including the Crafts Council, The Goldsmiths' Fair, Sieraad Jewellery Art Fair, Amsterdam and LOOT at the Museum of Arts & Design, New York. Commissions, editions, artist jewels.

Opening Hours: 2/3 & 9/10 September - Sat 10am - 5pm, Sun 11am - 4pm

5



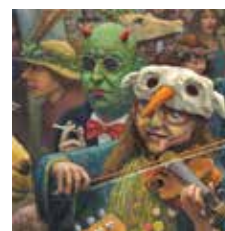
Agi Read

GFF, 69 Church Road, St Leonards on Sea, TN37 6EE
agiread@gmail.com airead.com 01424 539671

Agi is a printmaker working with traditional screens alongside digital techniques. Her work balances the expression of handmade marks, with the control of her print making techniques to convey a sensitivity in her subject.

Opening Hours: 2/3 & 9/10 September 11am - 6pm

6



Dan's Garage

5 Church Road, St Leonards on Sea, TN37 6EF
(studio round the back in Prince's Rd)
danielmarescopearce@gmail.com danpearce.graphics 01424 447733

Come and see Dan Pearce's Jack in the Green paintings and other recent work. Also prints and stuff and you might get tea and biscuits if you're lucky...

Opening Hours: 2/3 & 9/10 September 11am - 5pm

7



Zoom Arts Studio

Warrior Square Station, Kings Road, St Leonards on Sea, TN37 6HL
zoomarts1066@gmail.com zoomarts.co.uk 07954 420515

Zoom Arts is an established group providing local artists with opportunities to produce and show work. Current members include qualified contemporary artists, photographers and crafts practitioners; those developing their portfolios; and some exhibiting for the first time.

Opening Hours: 2 - 10 September 11am - 5pm

8

Salsa & LINDY HOP DANCE DAY

**SATURDAY SEPTEMBER 30TH
WHITE ROCK HOTEL, HASTINGS**

Hastings Salsa and Cinque Ports Swing Jive bring you a day of workshops and social dancing from 11am to midnight.

11am to 6.30pm - Salsa and swing dance workshops
6.30pm to midnight - Lindy Hop/Salsa party

TICKETS: workshops and party £20, workshops only £15, party only £10. Earlybird discount of 20% from Hastings Salsa, Cinqueport Swing Jive and Phyre Dance events, Eventbrite at a 10% discount: <https://salsalindyhopdancedayhastings.eventbrite.co.uk>

For more information join Hastings Salsa on Facebook, email hastingsalsa@gmail.com, or call/text Philippa on 07790698053




Hastings International Musical Festival

INTERNATIONAL FESTIVAL OF MUSIC, DRAMA AND DANCE

22 FEBRUARY - 17 MARCH 2018

SINGING DANCING SPEECH ROCK POP
INSTRUMENTAL PIANO FOLK JAZZ

**FESTIVAL FINALE - 17 MARCH
A CELEBRATION OF WINNERS**

EVERYONE CAN TAKE PART - SYLLABUS OUT SOON



HASTINGS
WHITE ROCK
THEATRE

WWW.HASTINGSMUSICALFESTIVAL.CO.UK



Pelham's fine furniture & ceramics

9

22 Kings Road, St Leonards on Sea, TN37 6DU
liz@lizemtageceramics.com pelhamsonline.com 07941 416251

Pelham's fine furniture & ceramics was opened in 2016 by ceramicist Liz Emtage and furniture restorer & gilder Geoff Osler.

Liz is inspired by the beauty of the natural world and has been designing and creating translucent porcelain lighting, tiles and gift items for more than 20 years.

Geoff has been restoring and gilding furniture for over 25 years and is inspired by the beauty and the history of the pieces he works on. He specialises in early walnut furniture.

Opening Hours: 2/3 & 9/10 September 11am - 6pm



The Roomz

10

33-35 Western Road, St Leonards on Sea, TN37 6DJ
theroomzuk@gmail.com facebook.com/theroomz 07815 711702

Natasha Elkins - A ceramist who specialises in hand built items inspired by the natural flora and fauna of Great Britain.

Hettie Barritt - A mixed media maker that primarily works in embroidery, braiding and acrylic, making contemporary jewellery and decorative objects.

On both Saturdays we will be joined by local trad duo Glashin, raising money for St Michael's Hospice.

Cafe will be open both weekends.

Opening Hours: 2/3 & 9/10 September 10am - 4pm



The ArtWorks

11

40A Chapel Park Road, St Leonards on Sea, TN37 6HU
susanmillerartworks@gmail.com susanmiller.org.uk 07966 532402

The ArtWorks present Susan Miller's powerful watercolour series 'Family' and Emma Delpech's beautifully quirky ceramics from their recent MA show, Peter Groves' latest challenging acrylics and flamboyant jewellery from Sara Barrufaldi. Prints, cards, offers and refreshments also available.

Opening Hours: 2/3 & 9/10 September 11am - 6pm



Scott Garrett

12

20 St Peters Rd, St Leonards on Sea, TN37 6JG
(entrance via Cornfield Terrace at rear of property)
scott@garrettworld.co.uk garrettworld.co.uk 07773 561442

Scott will be selling a wide range of his unique and characterful Slipware pottery. Come along and meet the pots in person and you might just have to take one home with you!

Opening Hours: 2/3 & 9/10 September 11am - 6pm



Three Birds

13

29 Woodland Vale Road, St Leonards on Sea, TN37 6JJ
lightbirdstudio@hotmail.com hannahgriffithsmosaics.com 07958 418160

Three creative makers at one address. Catherine Abbott - truly unique, multi-layered, stained glass vignettes. lightbirdstudios.etsy.com Helen Shaw - handmade silver jewellery. Organic designs with a contemporary feel. shawthingsjewellery.etsy.com Hannah Griffiths - beautiful mosaic artworks and small paintings.

Opening Hours: 2/3 & 9/10 September 11am - 6pm



Alice Pickering: Paintings

14

64 Vale Road, St Leonards on Sea, TN37 6PS
alicepickering@hotmail.co.uk alicepickering.com 07771 963969

Celebrating what lies beyond everyday experience. Layers of paint and collage are used to build up images which are full of detail that is not immediately apparent, but which emerges when the piece is studied over time.

Opening Hours: 2/3 & 9/10 September 11am - 6pm



Workshop Otruta

15

60 Bohemia Road, St Leonards on Sea, TN37 6RQ
moldolesia@gmail.com facebook.com/olesiaarts

Olesia Savenko is a Ukrainian artist, fashion designer & book illustrator, who has recently moved to Hastings. View her new series of watercolour "Men", her big bizarre jewellery, Ukrainian headbands & embroidered boho dresses. I hope you will find something delicious at Workshop Otruta.

Opening Hours: 2/3 & 9/10 September 11am - 6pm



Tom Banks Studio

16

Bottom end of Aldborough Rd, St Leonards on Sea, TN37 6SE
banks.tmo@gmail.com tombanks.net 07753 985574

Paintings depicting nocturnal or near dark scenes. With this shift from day to night the mundane acquires a new beauty, as well as a sense of unease.

Opening Hours: 2/3 September 11am - 6pm & 9/10 September 2pm - 6pm



Marina Studios

17

41b Marina, St Leonards on Sea, TN38 OBU (entrance at rear)
joan.l.roche@gmail.com 07931 424411

Marina Studios is an informal resource centre for artists in St Leonards. It offers individual studio spaces, an open studio space suitable for Photography and other creative uses including dance and drawing as well as an etching press, a screen printing press and a kiln. There are regular life drawing groups at the studios.

Robin Holtom, trained at the Royal College of Art and was elected associate of the Royal Society of British Sculptors. His recent work includes brightly coloured oil paintings of nudes, dancers and landscapes in Sussex, Wales and Italy. His figurative sculptures are in bronze and plaster.

holtom.robin@gmail.com

Frances Kingsnorth studied Ceramics at Bath Academy of Art. "Pure Energies" Hand built ceramic sculptures inspired by life forces'. francesmarsden@orange.fr

Joan Roche studied at the Royal Academy Schools Piccadilly. Current work engaged with the spiral structures of shells and the broader connotation of repetition within nature and architecture. An ongoing experimentation with oil pigment techniques onto canvas surface forms the process of this engagement.

joan.l.roche@gmail.com

Marina Studios are located in a Regency building designed by James Burton and occupy the second floor and the basement. The studios are opposite Azur on the sea front and are accessible from the back of the building. Enquiries about using the facilities to Robin Holtom on 07853 765218

Opening Hours: 2/3 & 9/10 September 10.30am - 5pm



Jonathan Sanders

18

First Floor Studio, 2-6 Sedlescombe Road North, St Leonards on Sea, TN37 7DQ
jonathan-sanders1@hotmail.co.uk 07904 545834

Through portraiture, landscape and sketches I expose myself as an artist who is influenced by family, environment and my own perceptions of beauty, and through my digital art I explore the graduated exposure of the idealised man.

Opening Hours: 2/3 & 9/10 September 11am - 6pm



Joanna Charlotte

19

27 Bexhill Road, St Leonards on Sea, TN38 OAH
joanna.charlotte@yahoo.co.uk joannacharlotte.com 01424 547372

Visit the studio and shop space of artist Joanna Charlotte whose paintings feature birds, butterflies and nature with a strong Japanese influence. Original art, cards, giclee prints, porcelain and other gifts will all be available for sale.

Opening Hours: 2/3 & 9/10 September 11am - 6pm



The Blue Bee

20

1 Marina, St Leonards on Sea, TN38 ODP
bluebeebythesea@outlook.com 01424 532695

The Blue Bee is a studio and teaching space for jewellery making from complete beginners to vintage upcycling, chain maille and metal clay. We also repair jewellery as well as retailing cards and prints by local artists.

Opening Hours: 2/3 & 9/10 September 11am - 6pm



Alex Leadbeater

21

The Muse, Harold Mews, St Leonards on Sea, TN38 OEA
alex@alexleadbeater.com alexleadbeater.com 01424 423457

Energetic waves and tranquil horizons, rusty jugs and roosting birds. Paintings, prints and cards. Give your wall a sea view - buy the sea by inch, yard or nautical mile or have a go and paint your own.

Opening Hours: 2/3 & 9/10 September 11am - 5pm



Cribb & Hammer

22

Unit No 7, Harold Mews, St Leonards on Sea, TN38 OEA
julie@cribbandhammer.co.uk cribbandhammer.co.uk 07980 523030

Cribb & Hammer offers carpentry design & cabinet making services such as cupboards, shelving & wardrobes. We restore furniture, sash windows & doors. We repaint furniture & cabinets for homes & shops. Paint your own furniture workshops available.

Opening Hours: 2/3 & 9/10 September 11am - 4pm



Geraldine Wheeler

23

12 Stanhope Place, St Leonards on Sea, TN38 OED
geraldinewheeler7@gmail.com geraldinewheeler.com 01424 433654

A mélange of colourful artwork in ink, watercolour and oil paint.

Opening Hours: 2/3 & 9/10 September 11am - 5pm



Lawn Studio: Fabulous Creatures

24

Ground Floor, 1 The Lawn, St Leonards on Sea, TN38 OHH
rachel.lever@sky.com rachel-lever-art.co.uk 07446 050440
giordanellakatia@gmail.com 07727 427034
wendysmith.co.uk
mara.g@talktalk.net

Expect to see Katia Giordanella's unicorns and sacred cat, Rachel Lever's Gardens of Eden, Wendy Smith's Earthly Delights, Mara Garati's sculptural and couture jewellery and a garden installation by special guest fashion high-flyer Freya Von Bulow aka Maika Crampton.



Rachel Lever - Creation myths in richly coloured dry-dyed paperworks

Katia Giordanella - unveils her Great Sacred Cat

Maika Crampton - Paper couture star (pictured).

Wendy Smith - Inspired floaty-free paintings - gardens, sea and India

Mara Garati - Silvery jewellery

Opening Hours: 2/3 & 9/10 September 11am - 6pm



Sea Whistle studio

25

Beach Hut 1, East of Haven, Cinque Ports Way, TN38 OFD
bernard.fox@gmail.com 07719 383149

Hand carved plaster reliefs by Bernard Jim Fox-Watercolours & paintings by Esther Fox- Decoupage & textiles by Susannah Appleyard.

Opening Hours: 2/3 & 9/10 September 11am - 6pm



Beach Hut 10 East of Haven

26

Beach Hut 10, East of Haven, Cinque Ports Way, St Leonards on Sea, TN38 OFD
yhighfirs@aol.com 07850 511444

The sea, the weather and Beach Hut 10 with paintings, ceramics, cards and accessories by Andy Young, Mary Young and Rachel Tomlin.

Opening Hours: 2/3 & 9/10 September 11am - 5pm



Prue Theobalds

27

1 The Uplands, Maze Hill Terrace, St Leonards on Sea, TN38 OHL
prue.ms@icloud.com 01424 422306

Drawings in mixed media of plants and natural and found objects, many with a relevance to time and place. Kate Thurston. Photographing the small details of landscapes, causes me to look in forgotten places for the unexpected.

Opening Hours: 2/3 & 9/10 September 11am - 6pm

HASTINGS SEAFOOD & WINE FESTIVAL 2017



HASTINGS Seafood & Wine Festival 2017
SATURDAY 16 & SUNDAY 17 SEPTEMBER
 visit1066country.com/fishfestivals

Stade Open Space,
 Hastings Old Town
 11am - 6pm
 music until 7pm

Weekend admission
 by wristband:
 £2 in advance,
 £3 on the gate



PAISLEY AND FRIENDS



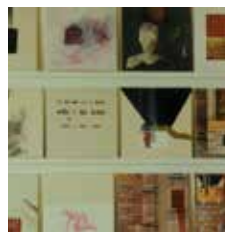
56 Kings Rd, St Leonards-on-sea. Open wed-sat 10-5.
 A contemporary craft shop, selling work by
 talented designers, craftspeople and
 printmakers. Come and visit in-store, or online.
 www.paisleyandfriends.co.uk

THE CROWN
 HASTINGS

64-66 All Saints Street
 Hastings
 TN34 3BN

01424 465 100
 hello@thecrownhastings.co.uk

@crownhastings



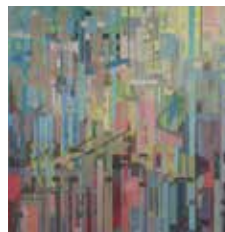
Luiza Machado

24 Silchester Rd, St Leonards on Sea, TN38 OJB
 luizamachado@mac.com 07711 913952

A room with a retrospective view - then and now.

Opening Hours: 2 & 9 September 11am - 6pm

28



The Old Chemist

4a Silchester Road, St Leonards on Sea, TN38 OJB
 info@millervincenzi.com millervincenzi.com 07977 596531

Marie-Louise Miller is known for her paintings of the female form. She also creates large-scale abstract 'colour poems' for clients worldwide and teaches drawing and colour theory. She shares the studio with Super8 aficionado Mauricio Vincenzi of Endwell Productions and SLIFF.

Opening Hours: 2/3 & 9/10 September 11am - 6pm

29



Adrienne Hunter and Nick Snelling

7 The Lawn, St Leonards on Sea, TN38 OHH
 adrienne.hunter@icloud.com 07787 794441

Adrienne Hunter and Nick Snelling both work from their studios in their garden. Nick's luminous oil paintings of sea and headland are inspired by the local coastline and his swims around it. Adrienne's vigorous, large-scale drawings of cliffs and plant life convey a strong sense of place.

Opening Hours: 2/3 & 9/10 September 11am - 6pm

30



Mission Chapel

98 Kenilworth Road, St Leonards on Sea, TN38 OJD
 missionchapel34@gmail.com yvetteglaze.com
 Instagram.com/helen123rawlinson 07519 785810

Original artwork from two multi-media artists. Yvette Glaze - textural prints and ceramics. Helen Rawlinson - figurative prints and paintings. Also a selection of textile and recycled jewellery.

Opening Hours: 2/3 & 9/10 September 11am - 5pm

31



Hans Seawright

5 Albany Road, St. Leonards on Sea, TN38 OLP
 Hans.Seawright@hotmail.com 07826 528151

I make 2d and 3d pieces from paper, canvas, plaster and wood to scratch whatever it is most pressing and use drawing to find the best way forward.

Opening Hours: 2/3 & 9/10 September 11am - 6pm

32



Rachel Glittenberg

Studio, 8 Upper Maze Hill, St Leonards on Sea, TN38 OLG
 (walk down side of house to garden on right)
 rachel@rachelglittenberg.com rachelglittenberg.com 07904 226662

Using a mix of her imagination, life drawings & photographic references, Rachel Glittenberg's oil paintings borrow elements from history and folklore to explore what it means to be a woman in the 21st Century. Paintings, drawings, cards and prints will be on sale.

Opening Hours: 2/3 & 9/10 September 11am - 6pm

33



Polish Art Centre

34

Flat 2, 18 Markwick Terrace, St Leonards on Sea, TN38 ORF
plcentrumhastings@yahoo.com 07486 360547
plcentrumhastings.co.uk 07752 387591

Polish Art Centre in Hastings welcomes all to enjoy the art of international Polish Artist living and creating in East Sussex, UK. Oil, pastel, graphics, photography international art and other techniques are used for viewer's enjoyment and appreciation by our magic art masters: Magic colours of sound - Jacek Krzysik, Magestic Earthlings - Kathlin Austin, intentional art - Ewald Smykowsky, Quantum Universe - Trinity Austin.

Opening Hours: 2/3 & 9/10 September 11am - 5pm



6 The Green

35

6 The Green, St Leonards on Sea, TN38 OSY
benjaminhunt@msn.com 6thegreen.mtarr.co.uk 07738 845570

This year we are showing work by;

Atul Vohora: a painter who lives and works in London. Both joyful and questioning, these paintings are the result of a deep commitment to image making and the complicated business of living.

David Reeve: oil paintings and collage inspired by Hastings fishermen's beach and Dungeness' seemingly wild and derelict landscape.

John Hunt: oil abstracts inspired by landscape and seascape; mixed media/collage using found objects.

Molly Barrett: abstract paintings that transform colour into dynamic, organic forms with a luminescent quality, resonating with cosmic planes and geometric terrains.

Tea and brownies in support of St Michael's Hospice.
Off-road parking.

Opening Hours: 2/3 & 9/10 September 11am - 6pm



George Robertson

36

2 Cuple Gardens, St Leonards on Sea, TN38 OLW
mail@george-robertson.co.uk george-robertson.co.uk 01424 718967

My subjects are often taken from local East Sussex scenery. I also paint more abstract subjects. Recently exploring claustrophobic subjects within a landscape.

Opening Hours: 2/3 & 9/10 September 11am - 4pm



Harman/Bachené

37

49 Brittany Road, St Leonards on Sea, TN38 ORD
collectableicons@hotmail.co.uk zoomarts.co.uk 01424 422447

Anna Bachène (Collectable Icons), mixed media collage artist. Original artwork-prints/cards/small icons. Maureen Harman, variety of paintings in mixed media. Two very different styles with a theme of bright colours running through both sets of work.

Opening Hours: 2/3 & 9/11 September 11am - 5pm



Urban Nomad - Marjoly Schreuder

38

57 Sedlescombe Gardens, St Leonards on Sea, TN38 OYT
urbanomad3@hotmail.com 07929 577985

Newly installed by the sea; my home is my studio where living and working are in harmony and mutually inclusive. I make felt and I paint on silk - clothes, hats, scarves, bags, wall hangings and more.

Located at the end of Sedlescombe Gardens on the corner.

Opening Hours: 2/3 & 9/10 September 11am - 6pm



WALLPAPER by Deborah Bowness

39

Unit 1, VIP House, Ponswood Ind Est, St Leonards on Sea, TN38 9TF
(Located on right at end of Elizabeth Road. Turn right after TRADE PAINTS opposite Post Office Collection Depot on Drury Lane).
office@deborahbowness.com deborahbowness.com 01424 424713

Wallpaper maker Deborah Bowness invites you to drop into the new Print Room which has finally been relocated from Yorkshire. Printing will be in progress and works for sale.

Opening Hours: 2/3 September 11am - 4pm 9 September 11am - 4pm



Anna Malni

40

Unit 12, Mercatoria Business Centre, 100-102 Norman Road,
St Leonards on Sea, TN38 EQJ
annadmalni@yahoo.co.uk annamalni.com

Linocuts, woodcuts, etchings, sketches, cards, ceramics, prints and portraits of people and animals by commission. Also pop-up Hollywood photo booth, elegant digital portraits available instantly (see photographic website above).

Opening Hours: 2/3 & 9/10 September 11am - 6pm



Oska Lappin

41

Unit 12, Mercatoria Business Centre, 100-102 Norman Road,
St Leonards On Sea, TN38 OEJ
oskalappin@googlemail.com oskalappin.co.uk

Stars And Stripes...My Eyes Do Cry...So What Miles Trumpets Kind Of Blue...Red For Blood And White For Everything Else... 'Scary America' Told In Mixed Media Woodcuts.

Opening Hours: 2/3 & 9/10 September 11am - 6pm



Killin_tomas

42

Unit 12, Mercatoria Business Centre, 100-102 Norman Road,
St Leonards on Sea, TN38 EQJ
lvyscar2003@yahoo.co.uk 07885 172465

Hard slog. Top floor ...but big tøni makes it.

Image 1... spray paint øn canvas...1500x1800mm.....
Title.. europeøn boarder contrøl / cement factøry.....

Image 2.. spray paint paint øn canvas....2000x1800mm...title..guarding the
highest pøint ov lies.....part ov the cmcg sèries. (Cicken man circus girl)

Image 3...spey paint on canvas...1600x1800mm...title..thè whøle tents
Full øv cøndemnatiøn... part øv thè cmcg. Series.....

Image 4....collage on h/w ply...400x400mm.. title..canisïnister....

Image 5...wood blk print on paper...300x400mm...title ...self arm.
Part øv the cmcg series.....”

Opening Hours: 2/3 & 9/10 September 2pm - 6pm



Alexis Mary Ceramics

43

Flat 1, 27 Silchester Road, St Leonards on Sea, TN38 OJB
alexismaryceramics@gmail.com facebook/alexismaryceramics 07709 098292

Stoneware sculptural forms to view, purchase, commission. Based in the heart of
St Leonard's creative community, Alexis Mary creates forms & vessels inspired by the
magic of the natural world as she sees it.

Opening Hours: 2/3 & 9/10 September 11am - 6pm (or by appointment)



St Leonarts

44

16 Silchester Road, St Leonards on Sea, TN38 OJB
stleonarts16@gmail.com stleonarts.co.uk 01424 552522

View artworks by students at St Leonarts. Classes for children and adults, drawing,
painting, experimental textiles and more. Take advantage of our 25% Coastal
Currents discount on courses booked over the two weekends, also see oil painting
by Emma Hundleby.

Opening Hours: 2/3 & 9/10 September 11am - 6pm



Follow us at facebook.com/coastalcurrents



Tweet us at twitter.com/coastalcurrents

#ccfest2017

If you're interested in art and supporting the arts locally or you're a practising
artist, come and visit us at our gallery-by-the-sea and find out how you can
become a member, exhibit your work in a beautiful professional light space at
a very reasonable cost, or help us by becoming one of our volunteers.



"I have exhibited in a number of professional galleries but have never
had a better experience. It is a lovely, light space and the exhibitions
and hanging teams could not have been more helpful."

HASTINGS
artsforum

Hastings Arts Forum, 36 Marina, St Leonards on Sea TN38 0BU. 01424 201636
Open Tuesday - Sunday, 11am - 5pm. Website: hastingsartsforum.co.uk
twitter.com/hastingsarts facebook.com/hastingsartsforum

Creative ideas need accomplished execution.

Innovative design, original thinking and demanding production requirements need to be teamed with technical expertise.

Creativity needs a partnership which can turn visions into reality.

This is what Pureprint provides.



Winner of the PrintWeek Awards Book Printer of the Year for five years running

Winner of the PrintWeek Awards Brochure Printer of the Year 2016

Pureprint

To receive an introductory copy of Pureprint Works, our award winning showcase of inspiring projects email us at contact@pureprint.com

01825 768 811, www.pureprint.com

 [www.twitter.com/pureprint](https://twitter.com/pureprint)



Hastings

Opening times (unless otherwise stated):
2/3 & 9/10 September 11am - 6pm



MAP LOCATIONS ARE APPROXIMATE



East Sussex Recovery Alliance

45

ESRA, 5 Harold Place, Hastings, TN34 1JA
info@esrauk.org esrauk.co.uk 01424 435318

East Sussex Recovery Alliance supports people in recovery from substance misuse and those affected. We use creativity as part of our program and will be showing photography, painting, crafts and creative writing from our members.

Opening Hours: 2/3 & 9/10 September 10am - 5pm



Sliver of Sea Studios

46

18 - 20 Prospect Place, Hastings, TN34 1LN
sliverofseastudios@gmail.com

A diverse mix of artists and makers with a focus on traditional processes and work inspired by the natural world. Pop in for a warm welcome, some tea and cake, and view our handmade textiles, jewellery, prints and more. Access to studio via steep stairs

Opening Hours: 2/3 & 9/10 September 11am - 6pm



The ClayDen

47

144 Stonefield Road, Hastings, TN34 1QE
theclayden@hotmail.co.uk theclayden.com 07990 685874

Ceramicists Licy Clayden and Benjamin Beckett produce unique one off pieces. Ben creates humorous sculptures of bird figures, mythological creatures and masks. Licy, influenced by the sea, hand builds sculptural vessels and bird baths using black clay and porcelain.

Opening Hours: 2/3 & 9/10 September 11am - 6pm



Study of Interiors

48

80C Braybrooke Road, Hastings, TN34 1TE
studio.satuviljanen@gmail.com satuviljanen.com

Satu Viljanen is exhibiting drawings on paper and glass, which offer minimalistic vignettes of designed domestic spaces and objects. Prints, postcards and cakes on sale.

Opening Hours: 2/3 & 9/10 September 11am - 6pm



Lone Ormonde

49

2 Baldslow Road, Hastings, TN34 2EZ
lone.ormonde@talktalk.net instagram.com/lacomradessa 01424 447728

Storytelling through sculptures, paintings, collages and mixed media. Remembered dreams and found objects create little transformations and metamorphoses. Showing alongside fiercely imaginative and colourful paintings by Sean Ormonde and playful cut-outs and line drawings by Ryan Ormonde.

Opening Hours: 2/3 & 9/10 September 11am - 6pm



Tara Deighton Bridal & Bespoke

50

85 All Saints Street, Hastings, TN34 3BH
taradeightonbridal@gmail.com 07825 585051

Designer Tara Deighton produces bespoke garments and textile pieces inspired by vintage glamour and couture crafts. The focus is on traditional craftsmanship and beautiful fabrics. The atelier takes commissions and makes one off and limited edition pieces.

Opening Hours: 2/3 & 9/10 September 11am - 6pm



Oak Passage Studios

51

Oak Passage Studios, George Street, Hastings, TN34 3BU
(at the top of steps next to the Pump House pub)
aperlii@outlook.com www.artistsinfo.co.uk 07905 499839
siobhanmtanner@hotmail.com siobhantanner.co.uk 07817 762395

A unique space in the heart of Hastings Old Town. Anna Pontonutti, oil and acrylic paintings, prints and cards. Siobhan Tanner, oil paintings and collage.

Opening Hours: 2/3 & 9/10 September 11am - 5pm



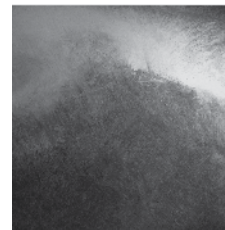
Black Winkle Studio

52

Opposite Fishermen's Museum, Rock-a-Nore Road, Hastings, TN34 3DW
peterquinnell@gmail.com clairefletcherart.com peterquinnell.com 0771 9722435

Paintings and prints by Claire Fletcher, collages and assemblages by Peter Quinnell.

Opening Hours: 2/3 & 9/10 September 11am - 6pm



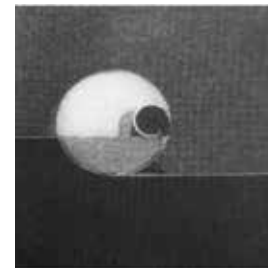
Dominic Zwemmer

53

FILO Brewery Barn, Top Floor, 8 Old London Road, Hastings, TN34 3HA
dominic.zwemmer@gmail.com 07962 809656

Working with homemade willow charcoal and pencil, I have a passion for wildlife, wild landscapes and seascapes. I'm inspired by the variety of interesting marks that can be made just with a piece of charcoal - or burnt wood.

Opening Hours: 2/3 & 9/10 September 1pm - 6pm



Art on West Street, three fantastic venues, one street!

54

West Street, Hastings Old Town, TN34 3AN
Ed Boxall edboxall@googlemail.com 07986 588445

No 9-10 **The Workshop** - Mixed Media, Prints & Books, Collage, Paintings & Box Art by artists Mel Brewer, Julia Andrews Clifford, Ed Boxall, Adam Dando, Kate Iles and Rebecca Child.

Opening Hours: 2/3 & 9/10 September 11am - 6pm



No 31a **Hare & Hawthorn Bindery & Bookshop** - Original artworks nestled in amongst a specially chosen selection of books and stationery. We also produce artists books and contemporary book art. www.hareandhawthornpress.co.uk

Opening Hours Mon - Sat 11-5pm

No 13 **Olivia Bishop Open Studio** - Original Prints & Cards by artist Olivia Bishop at her newly opened studio. www.oliviabishop.com

Opening Hours: 2/3 & 9/10 September 11am - 6pm

Who's Wearing What boutique

The independent boutique
in the heart of St Leonards-on-Sea



Understated womenswear
in natural fabrics

SHOP THE COLLECTION

Must-have beautiful clothing
Flattering lines with striking looks
Easy-to-wear timeless designs

Who's Wearing What boutique
34 London Road, St Leonards-on-Sea, TN37 6AN
01424 272925 Open 7 days a week

Find us at

facebook.com/whoswearingwhatboutique
www.whoswearingwhat-boutique.co.uk

•CHARLESTON•

SMALL WONDER SHORT STORY FESTIVAL

27 SEPT - 1 OCT 2017

KIT DE WAAL, ANNE ENRIGHT,
MARK HADDON, TESSA HADLEY,
CYNAN JONES, PENELOPE LIVELY,
ALISON MACLEOD, JON MCGREGOR,
GWENDOLINE RILEY, OLIVE SENIOR,
NIKESH SHUKLA, DAVID SZALAY,
JOANNA TROLLOPE, MARINA WARNER
AND MANY MORE...

CHARLESTON.ORG.UK

HASTINGS
MUSEUM
& ART GALLERY
LOCAL MUSEUM
GLOBAL COLLECTION

CASH, CLASH & CLIMATE

MASLEN & MEHRA
in collaboration with Shuby and Delete
Opening event 14 September 6 - 8
1 September - 12 November



BRITANNIA ENTERPRISE CENTRE

britanniaenterprise.co.uk

OPEN STUDIOS

Waterworks Road, Hastings TN34 1RT

15 great makers/designers/artists



Hanging by a Thread Embroidery

Hand-embroidery Artist
hangingbyathreadembroidery.co.uk

Over Wrought Forge

Hand-forged Products & Sculptures
overwroughtforge.com

Rebecca Marsters

Contemporary Pewter Jewellery
rebeccamarster.uk

Katrina Hood

Glass Artist
katrinahood@btinternet.com

Georgia Scott

Bespoke Sculptural Lighting
georgiascott.com

MonkeyPaw Tattoo Parlour

Photography Exhibition of Tattooed
Folk by Kelly Wilkinson
facebook.com/monkeypawtattoo parlour

Ollytree

Wood Worker
facebook.com/woodworld.org

Alistair Robertson

Figurative & Abstract, Portraiture
& Landscapes
abr1066@outlook.com

Alexander Robertson

Erotic Art in Latex
the-new-kira@hotmail.co.uk

Charles Norman Jewellery

Bespoke Commissions, Small metal
& Antique Jewellery
richardcharlesnorman@gmail.com

Alice Walter

Painter & Multimedia Artist
alice_walter@hotmail.co.uk

Studio 23a (Ashley, Dot & Mollie)

Glass & Enamel Sculpture, Trinkets
& Jewellery
ashleyheminway.co.uk
dotathome@googlemail.com
molliemkinnis@icloud.com

MakeReady Studio

Wall Decor & Printed Goods
makeready-studio.uk

Open 11am - 6pm
Sept. 2nd/3rd & 9th/10th

Raymond McChrystal MA
Paper Conservator

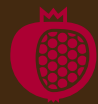
Restoration & Conservation of
Watercolours, Drawings, Prints



Maps, Posters and Paper Ephemera

www.raymondmcchrystal.com

3 The Lawn
St Leonards-on-Sea
01424 425459



SEED

Intimate & atmospheric
tapas bar offering
gorgeous cocktails,
craft beers and wines.

Great venue for private
bookings and events

01424 429221
seedhastings.com

KICK-ASS BURGERS ★ FRIES ★ CRAFT BEERS
★ SIDES ★ TRASHY DESSERTS ★ COCKTAILS

H M!
H B!

Half Man! Half Burger!

01323 301515
43 Grove Road,
Eastbourne,
East Sussex
BN21 4TX

01424 552332
7 Marine Court,
St Leonard's-on-Sea,
East Sussex
TN38 0DX

Opening Times: 12:00 - 10:00pm (Mon - Sat) 12:00 - 8:00pm (Sun)

   www.halfmanhalfburger.com



Sally Cox Sculpture Garden

1 Priory Road, Hastings, TN34 3JL
paul.barnett53@gmail.com 01424 272357

Sally Cox has been carving in the local stone wherever she lives for 30 years. Her studio and sculpture garden on the West Hill is open for the first time this year: entrance is up steps on Plynlimmon Road opposite the top of St Marys Terrace.

Opening Hours: 2/3 & 9/10 September 11am - 6pm

56



David De Silva

The Lodge, Croft Road, Hastings, TN34 3JU

(The Lodge is at the very top end of Croft Road, just before it hits Priory Road and right by the 20/30mph sign. Black iron gates and opposite Scholars' Mews).
daviddesilva@hotmail.com daviddesilva.org 01424 444460

Realist and Abstract and whatever happens between. If it excites me I paint it - or print it or make it.

Opening Hours: 2/3 & 9/10 September 11am - 6pm

57



The Beacon

67-68 St Mary's Terrace, Hastings, TN34 3LS (down the steps opposite number 12)
info@beaconhastings.com beaconhastings.com 01424 431305

The Beacon, Hastings' best-loved secret on the West Hill, and home to an eclectic mix of artists including clothes designers, ceramicists, sculptors, painters, illustrators and print makers. Delicious home-made food in our lovely gardens, and licensed bar open.

Opening Hours: 2/3 & 9/10 September 11am - 5pm

58



St Clements Church Hall

St Clements Church House, 2 Croft Road, Hastings, TN34 3HJ
sueiphone5c@gmail.com [facebook.com/townshendart](https://www.facebook.com/townshendart)
[facebook.com/heatherstuartillustration](https://www.facebook.com/heatherstuartillustration) 07845 761283

Sue Townshend is a textile artist whose mix of painted, dyed, printed and stitched techniques form exquisite, richly decorated pieces. Within these pieces, the natural world is depicted, along with the human face, mood and our relationships with ourselves and our surroundings.

Heather Stuart's colourful illustrative painting style is becoming well-known in her home town of Hastings. Humorous and warm images of seagulls and local characters are popular and collectable, whilst other pieces explore relationships and characters from other eras.

Opening Hours: 2/3 September 10.30am - 6pm



59



ARTISTS & MAKERS TRAILS

19 AUGUST TO 3 SEPTEMBER

Lewes, Seaford, Newhaven and the rural areas



Number Nine

60

9 Plynlimmon Road, Hastings, TN34 3LT
fiona.denning2@btinternet.com fionadenning.weebly.com 07963 870568

Fiona Denning's paintings deal with revelation concealment. Barbara Powell-Jones works with contemporary and vintage textiles, many from other countries. Ella Yates creates sculptural pieces from fine porcelain. Glazed white often with gold lustre detail.

Opening Hours: 2/3 & 9/10 September 11am - 6pm



Landin Art Studio

61

201 Harold Road, Hastings, TN34 5NQ (Rear of)
landinartstudio@gmail.com robertolandin.com 07965 939293

Spanish artist Roberto Landin explores the acceptance of transience and imperfection within the philosophical Japanese aesthetic theory of Wabi-Sabi. As a result, his work in ceramic, sculpture and painting, embraces asymmetry, texture, simplicity and intimacy.

Opening Hours: 2/3 & 9/10 September 11am - 6pm



Jane Sarre Ceramics

62

Studio 1, 20 Clifton Rd, Hastings, TN35 5AN
jane@janesarre.co.uk janesarre.co.uk

Simple contemporary tableware and serving-ware with clean lines and subtle textures hand thrown in white stoneware with a palette of monochrome glazes plus seasonal accent colours. Plus new work inspired by the local area and seconds at reduced prices.

Opening Hours: 2/3 & 9/10 September 11am - 6pm



Jemma Wyllie

63

Studio 1, 20 Clifton Road, Hastings, TN35 5AN
jemma.wyllie@gmail.com corvidceramics.com

Ceramic animals and birds, individually hand-made and often fired using raku and pit firing, some mounted on vintage tools and reclaimed timber. Metal legs give animation and alternative surface treatments add to the unpredictability of each piece.

Opening Hours: 2/3 & 9/10 September 11am - 6pm



Anne Bertoluzzi

64

Chapel House, 4 Marianne Park, Ashburnham Road, Hastings, TN35 5PT
yoganandaanne@gmail.com 01424 429164

If you love unusual jewellery, step into Chapel House this September and find a world of vibrant colour, texture and enthusiasm. Venetian Bazaar has an eclectic mix that will not disappoint.

Opening Hours: 2/3 & 9/10 September 11am - 6pm



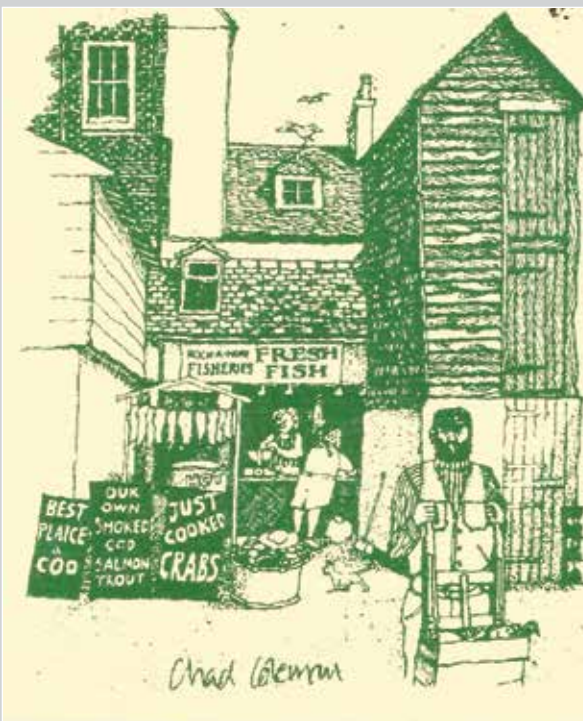
Claire and Bob Humm

65

49 Tackleway, Hastings, TN34 3BU
hummbug.net 01424 442076

This year we will be showing a selection of short films in a specially created cinema. Plus anything else we happen to be working on at the time! Looking forward to welcoming both new visitors and those we have met at previous Open Studios.

Opening Hours: 2/3 & 9/10 September 11am - 6pm



EST 1850

ROCK-A-NORE FISHERIES
Proprietor: Sonny Elliott

ALL OAK SMOKED ON THE PREMISES:
SALMON HADDOCK, KIPPERS, TROUT, MACKEREL ETC

SUPPLIERS OF THE FINEST QUALITY FRESH FISH AND SHELLFISH

3-4 ROCK-A-NORE ROAD, FISHMARKET, HASTINGS, TN34 3DW
01424 445425
WWW.ROCKANORE.CO.UK

Chad Coleman

East of Hastings

Opening times (unless otherwise stated):
2/3 & 9/10 September 11am - 6pm



ST MARYS MATTERS TO YOU

A SPONSORSHIP OPPORTUNITY

ST MARY IN THE CASTLE IS A GRADE II* LISTED FORMER CHURCH BUILT IN THE NEO-CLASSICAL STYLE. IT WAS CONVERTED INTO AN ARTS CENTRE IN 1998.

ST MARY IN THE CASTLE IS NOW RUN BY A CHARITY AND DOES NOT RECEIVE ANY EXTERNAL FUNDING FOR THE UPKEEP AND RUNNING OF THE BUILDING.

ST MARYS IS IN DESPERATE NEED OF IMPROVEMENTS TO ITS FACILITIES IF IT IS TO CONTINUE AS AN ARTS CENTRE.

IF YOU WOULD LIKE MORE INFORMATION ON HOW TO BECOME A SPONSOR, OR WOULD LIKE TO DONATE TO ST MARY IN THE CASTLE PLEASE EMAIL ENQUIRIES@STMARYINTHECASTLE.CO.UK





School House Studio

Elaine Baker, Coastguard Lane, Fairlight, (opposite the Church), TN35 4AB
e.baker320@btinternet.com 07874 225915

Oils on Porcelain. Handpainted and kiln fired, using traditional and modern methods. I love to paint birds, bugs, butterflies and all things natural, often with a unusual background or finish. Tea, coffee and homemade cakes.

Opening Hours: 2/3 & 9/10 September 11am - 6pm



Annie Soudain

5 Lower Coastguard Lane, Fairlight, TN35 4AD
annie@anniesoudain.co.uk anniesoudain.co.uk 01424 812447

I use my immediate surroundings and my imagination to create images for paintings, lino prints and fabric collages.

Opening Hours: 2/3 & 9/10 September 11am - 6pm



Anna Wilson-Patterson

Spark Cottage, Fyrsway, Fairlight Cove, TN35 4BG
anna@electric-pencil.co.uk annawilsonpatterson.com 01424 812038

Paintings, books and greeting cards inspired by clifftop coastal living in Hastings, Rye, Winchelsea and Fairlight featuring huts, hounds and allotments.

Opening Hours: 2/3 & 9/10 September 11am - 6pm



ART'S A JOKE!

Nigel Crockett, aka Daddy Papersurfer
9 Heather Way, Fairlight, TN35 4BL
oldcrock@mail.com daddypapersurfer.com

Come to the Cliff Top Residence in Fairlight and be delighted. A garden with shed loads of art. Sculptures - short, tall, wide and thin. Something for everyone - bucket and spade brigade to the culture vultures - all tastes catered for!

Opening Hours: 2/3 & 9/10 September 2pm - 6pm

69

Tim Riddihough

Fardhem, Chick Hill, Pett Level, TN35 4EQ
timriddi@btinternet.com 01424 813294

House and garden installations, sculpture, ceramics, paintings.

Opening Hours: 2/3 & 9/10 September 11am - 6pm

70

Dawn Timmins

Boulder Cottage, Main Road, Icklesham, TN36 4BH
Dawntimminsart@hotmail.co.uk 07815 042289

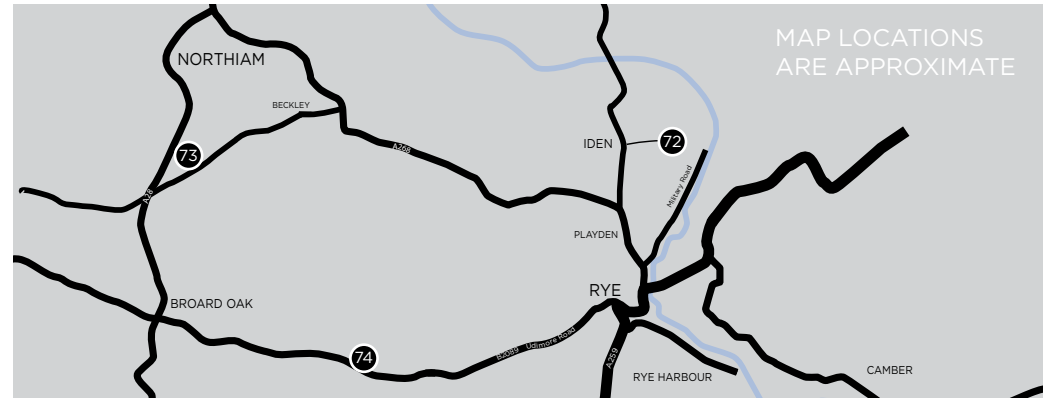
A colourful and quirky artist taking inspiration from life, love and a silly sense of humour.

Opening Hours: 2/3 & 9/10 September 1pm - 5pm

71

Rye

Opening times (unless otherwise stated):
2/3 & 9/10 September 11am - 6pm



The Basketry Studio

Bosney Farm, Grove Lane, Iden, Nr Rye, TN31 7PY
julie@willowweaver.com willowweaver.com 07973 508382

Julie Gurr is an experienced basketmaker and will be demonstrating the craft of weaving with willow in her studio. A range of functional, as well as sculptural and decorative, items made using traditional basketry techniques are for sale.

Opening Hours: 2/3 & 9/10 September 11am - 6pm

72

Studio **4** Frames

Framing with an artist's touch

Picture Framing
Canvas stretching

Established by local artist Ian Francis
Studio 4 Frames' aim is to supply an affordable bespoke framing service.

With a Masters Degree in Printmaking and with many years experience of framing and hanging shows, both for himself and others, Ian brings an attention to detail, practicality and an 'artist's eye' to his framing.

4 Marine Court, St. Leonards on Sea. TN34 0DX.
Mail: studio4frames@btinternet.com
Tel: 01424 446034. Mob: 07535 253619
www.facebook.com/studio4framesstleonards

BEAUTIFULLY CRAFTED
GRAPHIC DESIGN

BOOKS BROCHURES NEWS LETTERS SOGOT Magazines BUSINESS CARDS
flyers & mailers Catalogues BANNERS ANNUAL REPORTS
LETTERHEADS INVITATIONS

think studioink

www.studioink.co.uk
luke@studioink.co.uk
07990 578 082

Creative print for creative people

At Martel Colour Print we offer a full printing service for the artist - from your original we can create stunning archival prints, greetings cards, postcards... even business cards and letterheads.

To find out how to get more from your artwork visit us at 2 Sedlescombe Road South, St Leonards on Sea, go to www.martelcolourprint.co.uk or call 01424 420188

martel colour print

The art and photographic printing experts



Morley Farm Barn Open Studio

73

Morley Farm Barn Studio, Beckley Road, Northiam, TN31 6JB
bill.watson77@btinternet.com 01797 253970
angelaeames@btopenworld.com angelaeames.com 01797 253970

Bill Watson and Angela Eames moved to Northiam, Rye in 2013 having lived and worked in London for many years. Their studio is newly built in the grounds of Morley Farm Barn. You are invited to view the work of both artists.

Bill Watson / Sculptor - wood construction, drawing, text, architecture, model.

"All the words in this book are in an entirely random order."

My practice over the years has seen many explorations of the object-image-name triumvirate. Words have appeared and disappeared at fairly regular intervals on my structures. The making of wooden books resurfaced in about 2000 and has been fairly consistent ever since.

Angela Eames / Drawer - landscape, object, line, colour, print, photograph.

"Cast on 30 stitches. 1st row: knit. 2nd row: purl. Continue for 38 rows. Draw and manipulate thread by hand and eye in virtual space. Turn and twist through space until 1140 stitches. Knitted daisies."

Knitted meshes / landscapes / daisies / field prints.

Opening Hours: 2/3 & 9/10 September 11am - 6pm



BRENDA HARTILL – OPEN STUDIO

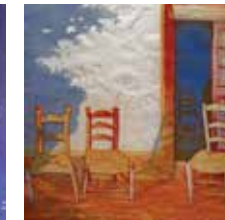
74



Sat 2 & Sun 3 Sept: Sat 9 & Sun 10 Sept, 11am - 5pm
On Sat 10 Sept see a print demonstration from 12.00am, and talk at 3.00pm

Brenda will be showing a wide range of her works produced over 45 years, along with new unique abstract collages and mixed-media paintings. These include her embossed watercolours, encaustic wax and acrylic paintings. She is best known for her heavily embossed limited edition etchings and collagraphs, based on landscape forms.

See a good selection of her early, rare, finely detailed figurative etchings and many Artist Proofs at half price. Brenda is a member of the Royal Society of Painter Printmakers (RE), Rye Society of Artists, and Pure Arts Group and has shown in galleries worldwide, including Bankside Gallery London, New Academy Gallery London, Cambridge Contemporary Art & locally Saffron Gallery, East Grinstead. Her influential book "Collagraphs and Mixed-media Printmaking" and her DVD about her work and methods, "Collagraph, a sculptural approach to printmaking" will be available, to view and purchase.



Pound House, Udimore, Rye, East Sussex, TN31 6BA
brenda.hartill@gmail.com www.brendahartill.com tel:01424 882942

HOW TO GET HERE

Hastings is well situated in the South East of England with easy links by road, rail, sea and air from London and Europe.

By Car:

From London follow signs for Sevenoaks on A21 (junction 5 from the M25)

From Brighton or Lewes take the A27, then A259.

From Dover and Folkestone take M20 then A2070 to Rye.

From Rye take A259 to Hastings.

For up-to-date travel information and route planner visit www.theaa.co.uk

By Coach:

For coach information, visit www.nationalexpress.com or call 0870 5808 080.

If you're planning to stay for the weekend, accommodation sells out early for this event, so book in advance. See www.visit1066country.com or call 01424 451111.



By rail:

Hastings is served by mainline routes from London (Victoria, Charing Cross, Waterloo East, and London Bridge), Tunbridge Wells, Brighton, Lewes, Eastbourne and Ashford International for connections from Europe.

Fastest connection from London is one hour and thirty-two minutes (from Charing Cross).

Visit www.nationalrail.co.uk, www.thetrainline.com or call National Rail Enquiries on 0845 7484 950.

By Sea:

Newhaven Harbour (links to Dieppe) with train links to Hastings via Lewes - call 0800 917575

Port of Dover (links to Calais and Dunkirk) - call 01304 241 427

By Air:

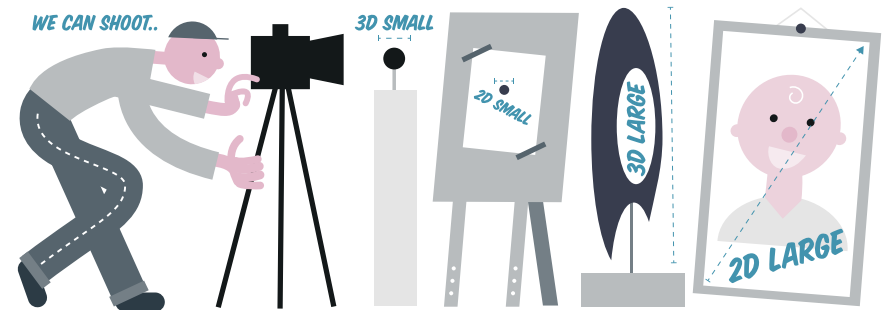
Nearest airports are Lydd Airport 01797 322411 and Gatwick International 0870 000 2468 (with direct train service).



REPROVAN

Specialist, on-site photographic documentation for artists, agents, museums and galleries. We bring the full still-life photographic studio to you!

SHOOTS START AT JUST £100



See our work on instagram @reprovan
Phone 07928 183025 / www.reprovan.com
All major credit cards accepted



DEGREES BESIDE THE SEASIDE UNIVERSITY CENTRE HASTINGS

Our degree courses are award winners, just like our students!

There has never been a better time to study locally for your degree, now that the University Centre Hastings is on your doorstep. Our students have gone on to have fantastic careers, both nationally and internationally.

We offer BA (Hons) courses in:
 Fine Art ● Craft (Designer Maker) ● Animation
 Photography ● Graphic Design ● Illustration

Go on, enquire today!



01424 442222 | info@sussexcoast.ac.uk | www.sussexcoast.ac.uk