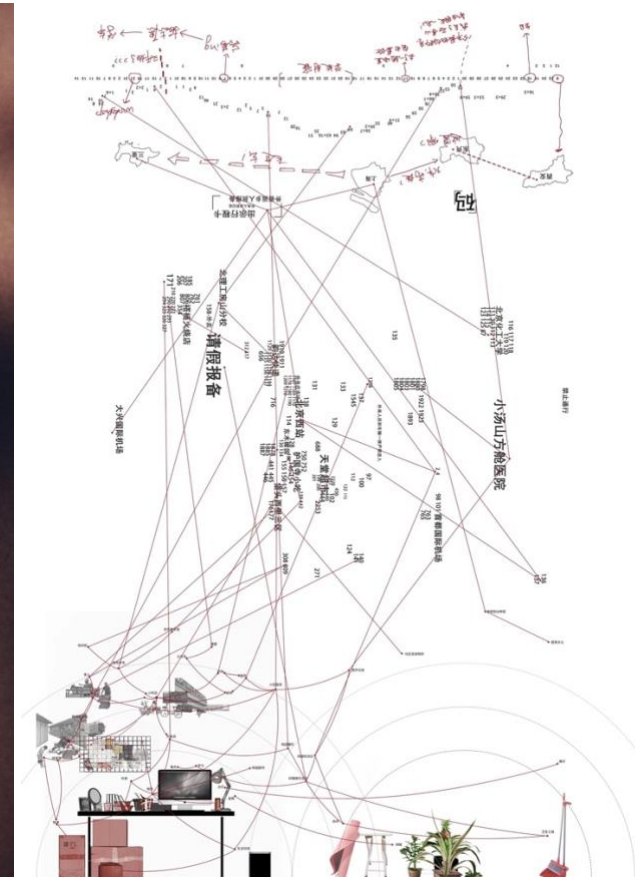
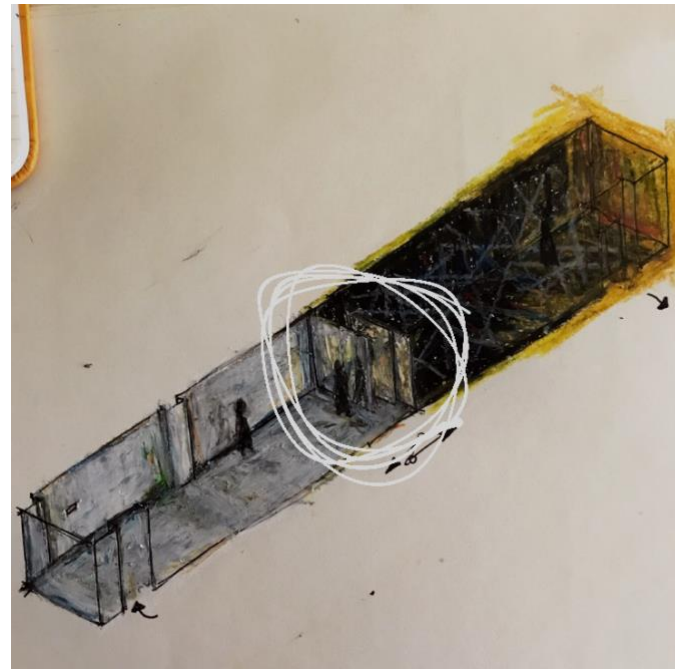
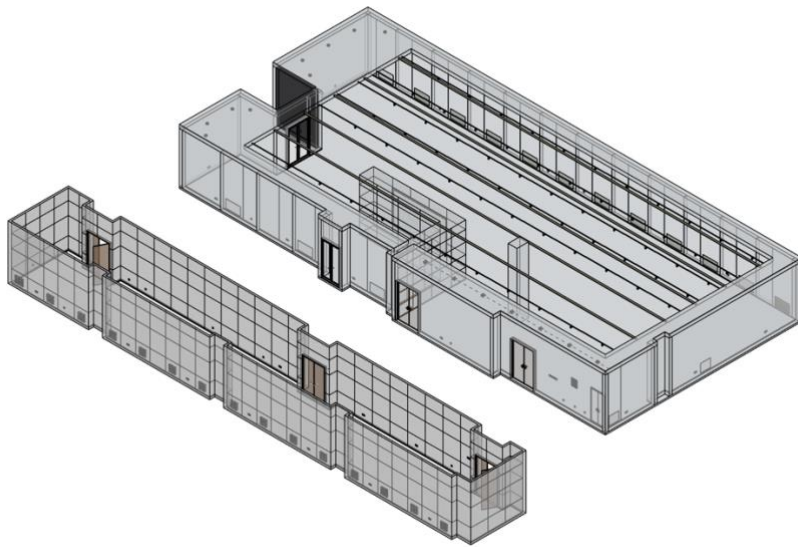




Exhibition poster, 2023



Left: installing the exhibition; right: the socio-spatial relationship among different objects, groups of people and locations



3D model of the site and the initial design of the exhibition space



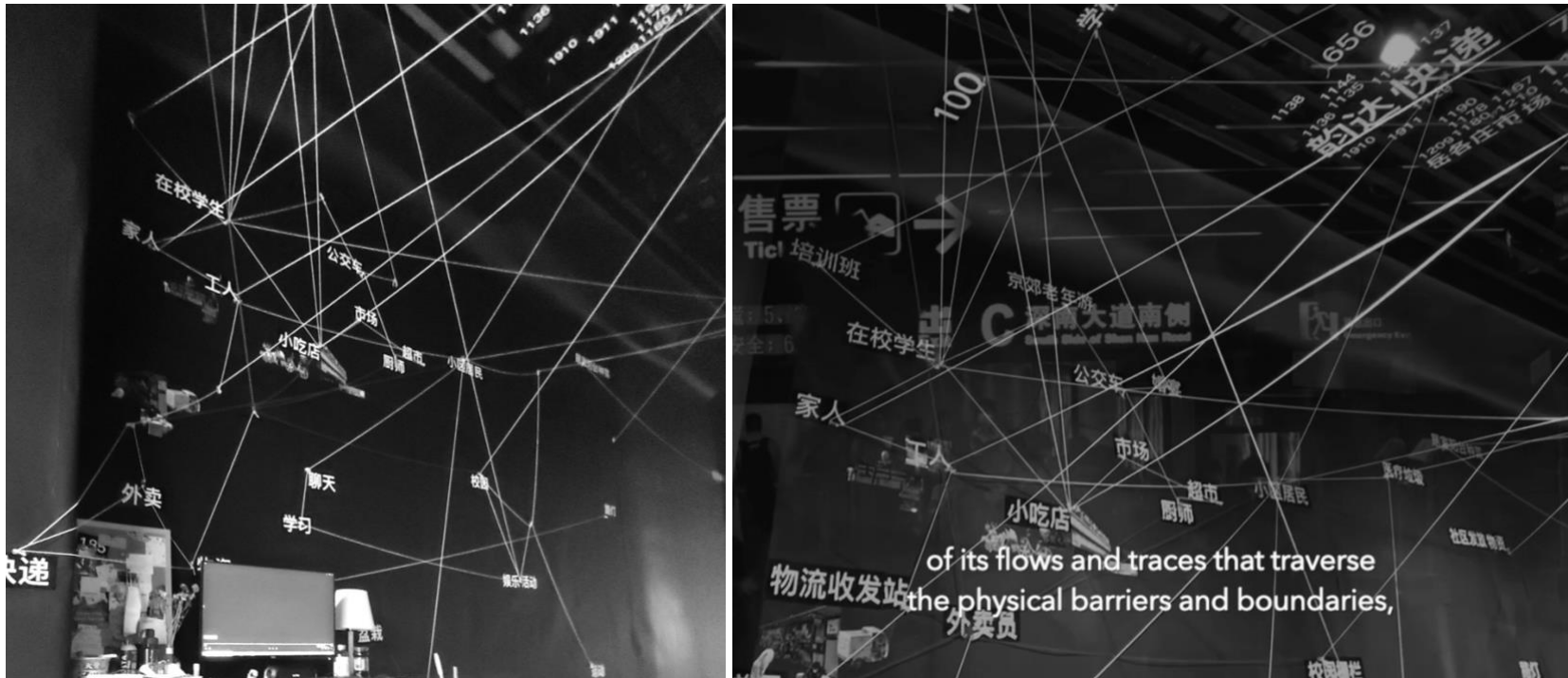
Left: exhibition scenario, proposal, 2022; right: exhibition space, 2023



Storyboard, 2023

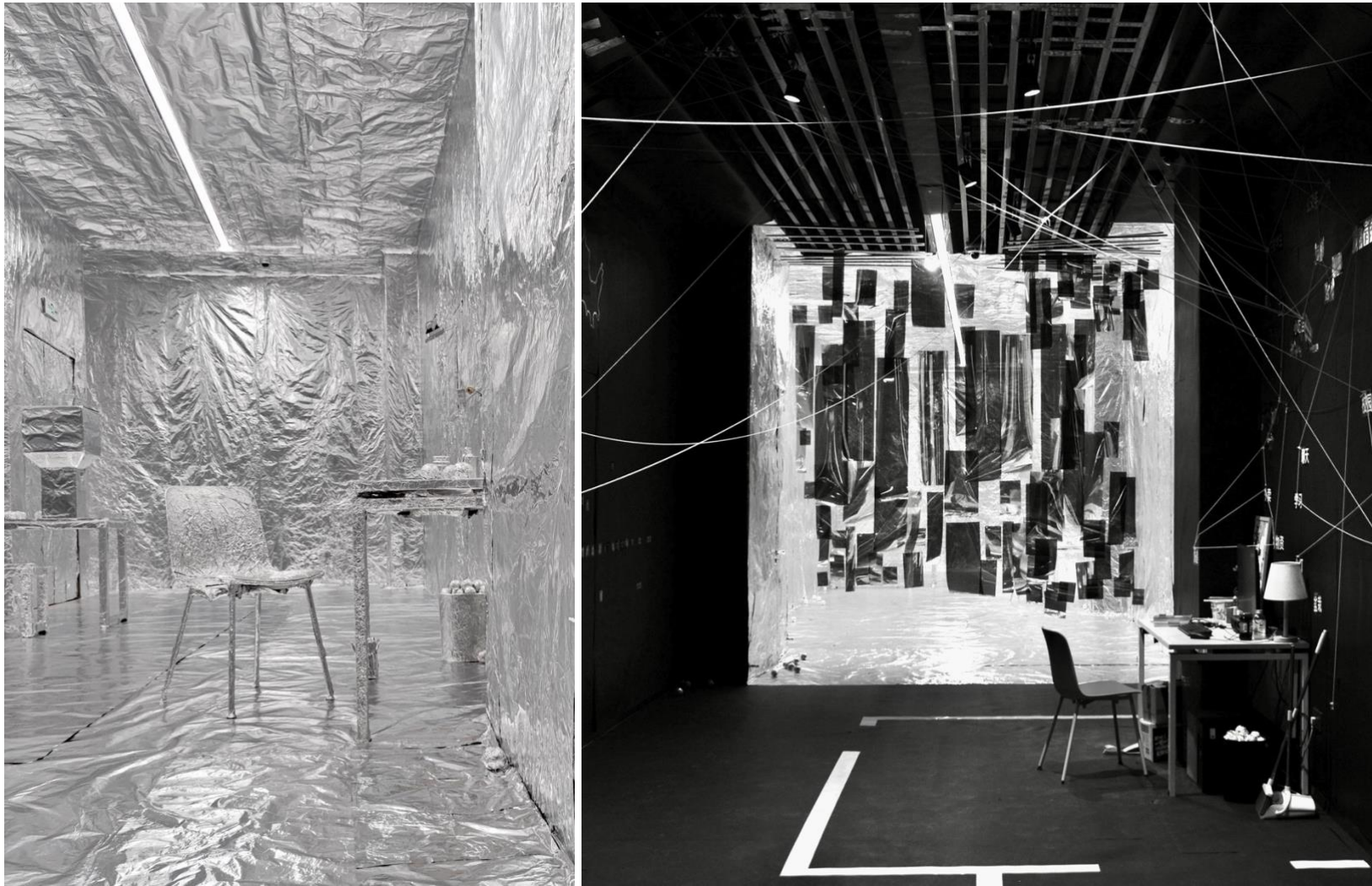


Film stills, *Traces Under the Surface* (2022)



of its flows and traces that traverse
the physical barriers and boundaries,

Mapping the socio-spatial relationship in Beijing during lockdown



Photos, *Traces Under the Surface*, exhibition, Red-River Culture Art Museum, 2023



Traces Under the Surface, exhibition, Red-River Culture Art Museum, 2023